

CHESHIRE EAST HEALTH AND WELLBEING BOARD
Reports Cover Sheet

Executive Summary

Title of Report:	Cheshire East COVID-19 Outbreak Prevention, Management and Support Plan
Date of meeting:	28 th July 2020
Written by:	Shelley Brough, Rod Thomson, Matt Tyrer
Contact details:	Shelley.Brough@cheshireeast.gov.uk
Health & Wellbeing Board Lead:	Matt Tyrer

Is this report for:	Information <input checked="" type="checkbox"/>	Discussion <input type="checkbox"/>	Decision <input type="checkbox"/>
Why is the report being brought to the board?	To provide an overview of the approach to the management of local outbreaks and the workstreams being undertaken in Cheshire East.		
Please detail which, if any, of the Health & Wellbeing Strategy priorities this report relates to?	Creating a place that supports health and wellbeing for everyone living in Cheshire East <input checked="" type="checkbox"/> Improving the mental health and wellbeing of people living and working in Cheshire East <input type="checkbox"/> Enable more people to live well for longer <input checked="" type="checkbox"/> All of the above <input type="checkbox"/>		
Please detail which, if any, of the Health & Wellbeing Principles this report relates to?	Equality and Fairness <input type="checkbox"/> Accessibility <input type="checkbox"/> Integration <input type="checkbox"/> Quality <input type="checkbox"/> Sustainability <input type="checkbox"/> Safeguarding <input type="checkbox"/> All of the above <input checked="" type="checkbox"/>		
Key Actions for the Health & Wellbeing Board to address. Please state recommendations for action.	Note the contents of the report and the role of the Health and Wellbeing Board in oversight and governance of the Local Outbreak Plan. To maintain a Local Outbreak Plan, which is an evolving document through ongoing learning and developments. To include Test Trace Contain Enable (TTCE) as a standing agenda item as part of the Local Outbreak Plan until such time as it can be stepped down. To work in partnership in line with the Local Outbreak Plan as part of our local response in the event of a local outbreak.		

Has the report been considered at any other committee meeting of the Council/meeting of the CCG board/stakeholders?	The Local Outbreak Plan summary has been reviewed in CEBRA and has been shared with partners and the public. The Plan summary is available on the Council's website: https://www.cheshireeast.gov.uk/pdf/covid-19/cec-covid-outbreak-doc-4-digital-lres-final.pdf
Has public, service user, patient feedback/consultation informed the recommendations of this report?	<p>No, the contents of the plan were mandated by government, and the timescales for publication directed by government were extremely short as an urgent response the national Covid-19 recovery plan.</p> <p>A core function and role of the Local Authority within the plan is engagement and communication with local people, places and communities. Therefore, a communications strategy has been developed which underpins the plan for future communication and engagement activities.</p>
If recommendations are adopted, how will residents benefit? Detail benefits and reasons why they will benefit.	<p>There is a strong evidence base, and long standing embedded Public Health practice which supports the deployment of a Test Trace Contain Enable (TTCE) as an effective prevention approach for infectious diseases such as Covid-19.</p> <p>A local approach will be delivered to allow effective implementation of the Test Trace Contain and Enable (TTCE) approach that will allow continued easing of lockdown measures across Cheshire East.</p>

1 Report Summary

- 1.1 The report summarises the work being undertaken to develop a localised approach to a Covid-19 Test Trace Contain Enable (TTCE) programme in Cheshire East. The local role is to support vulnerable people and complex places, the report therefore recognises the enabling work that needs to take place to support this.
- 1.2 The primary objectives of the TTCE programme identified by the DHSC as part of 'Local Outbreak Control Plans' will be to control the COVID-19 rate of reproduction (R), reduce the spread of infection and save lives, and in doing so help to return life to as normal as possible, for as many people as possible, in a way that is safe, protects our health and care systems and releases our economy.
- 1.3 The Health and Wellbeing Board will be providing oversight of both the local Covid-19 'Health Protection Board' and the 'Local Engagement Board'.

2 Recommendations

That the Health and Wellbeing Board:

- 2.1 Note the contents of the report, and their role in the governance of the Covid-19 Local Outbreak Plan.
- 2.2 Oversee and maintain the Local Outbreak Plan, which is an evolving document through ongoing learning and developments.

- 2.3 Provide oversight of both the local Covid-19 'Health Protection Board' and the 'Local Engagement Board'.
- 2.4 Include Test Trace Contain Enable (TTCE) and the Local Outbreak Plan as a standing agenda item as part of the Local Outbreak Plan until such time as it can be stepped down.
- 2.5 Work in partnership in line with the Local Outbreak Plan as part of our local response in the event of a local outbreak.

3 Reasons for Recommendations

- 3.1 The approaches within the report have been mandated by the national guidance on how Local Outbreak Plans should be organised and the seven key workstreams (Themes) that form part of the Plan.
- 3.2 Local Outbreak Plans form a key part of the national and local Covid-19 Recovery Plan.
- 3.3 Work on the plan continues at scale and pace within Cheshire East, across Cheshire and with strategic partners across Cheshire and Merseyside and the Health and Wellbeing Board will need to maintain oversight of our local role within the wider approach.

4 Impact on Health and Wellbeing Strategy Priorities

- 4.1 This will support people to ***live well for longer*** particularly as this will enable the targeting of testing in communities and occupations that are identified as higher risk as well as allow us to respond rapidly to potential outbreaks to mitigate and minimise the effect on our communities to enable continued easing of lockdown restrictions. Key objectives of the Local Outbreak Plan include:
 - To control, minimise or eliminate community transmission of COVID-19 by reducing the rate of infection and enable people to live a safer and more normal life.
 - To protect public health by identifying the source of the COVID-19 outbreak and implementing necessary control measures to prevent further spread.
 - Reduce or at least minimise the impact on inequalities of COVID-19.
 - Engage the population in an approach to help our communities (build trust and participation) through effective local communications and engagement.
 - Minimise the impact on the economy and expedite recovery.

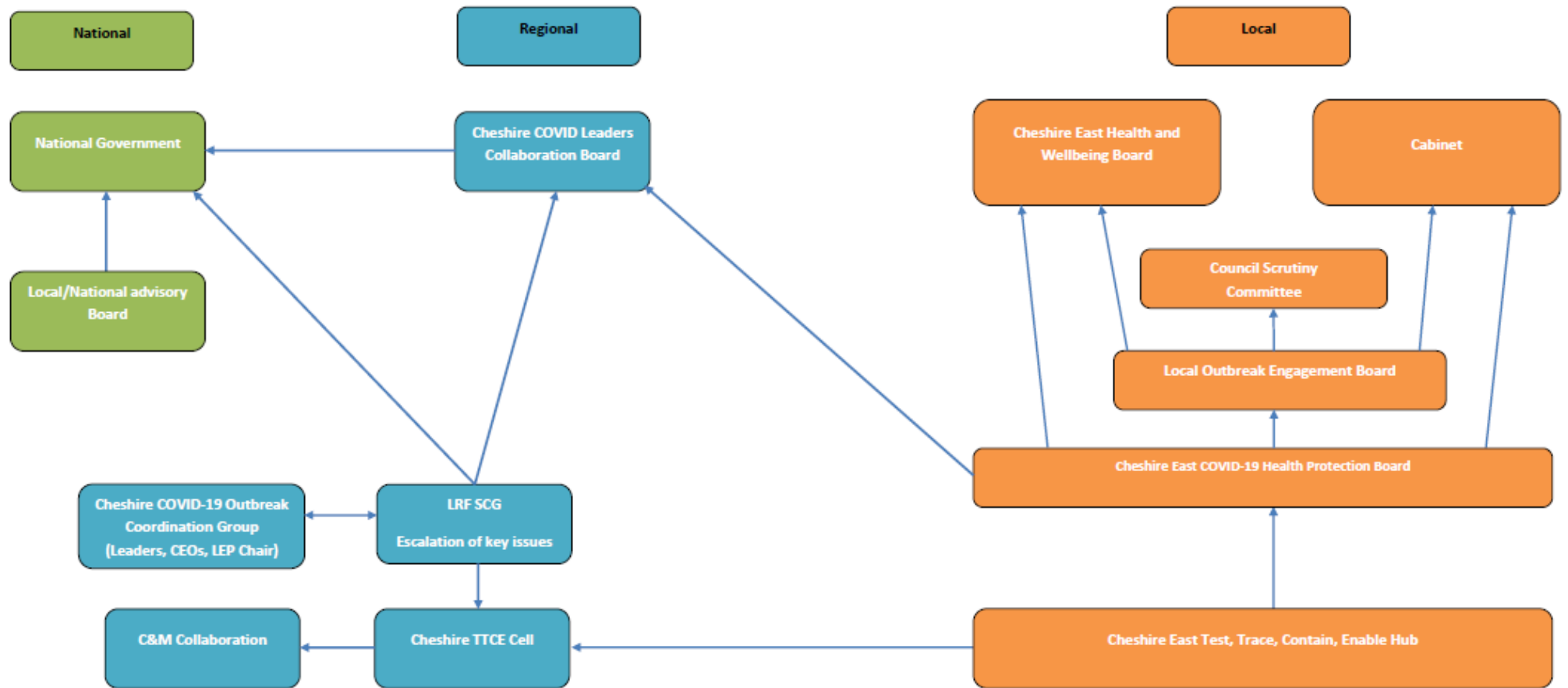
5 Background and Options

- 5.1 The government's approach to localised TTCE mandated the creation of Local Outbreak Plans at pace with key workstreams being identified at a national level. This report provides a summary of our local approach in line with the national Test and Trace Programme.

- 5.2 We have worked collaboratively on our local approach with Public Health England, The Cheshire and Merseyside Public Health Collaborative (Champs), the Cheshire Resilience forum and Cheshire West and Chester Council as our local 'Beacon Site'.
- 5.3 Work is ongoing on seven key workstreams to ensure that we respond rapidly to local issues in a way that prevents and manages outbreaks and supports and protects our residents. The seven workstreams include:
- **Theme 1 - Care homes and schools.** Planning for local outbreaks in care homes and schools (e.g. defining monitoring arrangements, potential scenarios and planning the required response).
 - **Theme 2 - High risk places, locations and communities.** Identifying and planning how to manage other high-risk places, locations and communities of interest including sheltered housing, dormitories for migrant workers, transport access points (e.g., ports, airports), detained settings, rough sleepers, key essential businesses, essential infrastructure (e.g. defining preventative measures and outbreak management strategies).
 - **Theme 3 - Local testing capacity.** Identifying methods for local testing to ensure a swift response that is accessible to the entire population This could include delivering tests to isolated individuals, establishing local pop-up sites or hosting mobile testing units at high-risk locations (e.g. defining how to prioritise and manage deployment).
 - **Theme 4 - Contact tracing in complex settings.** Assessing local and regional contact tracing and infection control capability in complex settings (e.g., Level 1b) and the need for mutual aid (e.g. identifying specific local complex communities of interest and settings, developing assumptions to estimate demand, developing options to scale capacity if needed).
 - **Theme 5 - Data integration.** Integrating national and local data and scenario planning through the Joint Biosecurity Centre Playbook (e.g., data management planning, including data security, NHS data linkages).
 - **Theme 6 - Vulnerable people.** Supporting vulnerable local people to get help to self-isolate (e.g. encouraging neighbours to offer support, identifying relevant community groups, planning how to co-ordinate and deploy) and ensuring services meet the needs of diverse communities.
 - **Theme 7 – Local Boards and Legal Framework.** Establishing governance structures led by existing Covid-19 Health Protection Boards in conjunction with local NHS and supported by existing Gold command forums and a new member-led Board to communicate with the general public.
- 5.4 The Local Outbreak Plan will be used for the prevention, investigation, management and containment of community outbreaks of COVID-19 in complex settings and communities within Cheshire East not already covered by existing outbreak control processes. Initial priority groups identified through local insight and national data include:

Complex settings	High risk communities	High risk places and locations
<ul style="list-style-type: none"> Hotels currently housing homeless residents Hotels housing refugees and asylum seekers Homeless hostels Learning disability supported living Extra Care housing Mental Health residential settings Secure residential facilities Youth housing Probation centres Primary Care (GP Surgeries, dental, optometry, pharmacies) 	<ul style="list-style-type: none"> BAME communities Domestic abuse victims Gypsy and Traveler Homeless Migrant workers Refugees and asylum seekers Student population Sex workers Substance users 	<ul style="list-style-type: none"> Early years / childcare settings (not covered by guidance for schools) Public / shared transport Workplaces (e.g. construction sites, food businesses, including restaurants, pubs, meat processing and packing plants, hairdressers and beauticians) Other well-defined settings and gatherings such as places of worship / private social events Houses of Multiple Occupation

5.5 Local, Regional and National Governance Structure:



- 5.6 The role of the 'Covid-19 Health Protection Board' is to make recommendations on actions relating to Outbreak Management within Cheshire East with specific duties to protect the population of Cheshire East in relation to COVID-19. The Health Protection Board will decide if additional action is required over and above normal outbreak management and will provide recommendations to the Cabinet as well as assurance to Cheshire East Health and Wellbeing Board.
- 5.7 The role of the 'Local Outbreak Engagement Board' is to provide political oversight of the delivery of the Local Outbreak Management Plan. This includes the provision of appropriate support and challenge to the actions that arise in responding to outbreaks, and to engage with local communities to secure their support. Effective communication with the public and key stakeholders is a core role of the Local Authority as mandated nationally. Effective communication is key to the success of local outbreak prevention and management. The Local Outbreak Engagement Board will provide recommendations to Cabinet and assurance to Cheshire East Health and Wellbeing Board.

6 Access to Information

- 6.1 The background papers relating to this report can be inspected by contacting the report writer:

Name: Shelley Brough
Designation: Head of Integrated Commissioning
Tel No: 01270 686882
Email: shelley.brough@cheshireeast.gov.uk