

# THE STRATEGIC COUNCIL

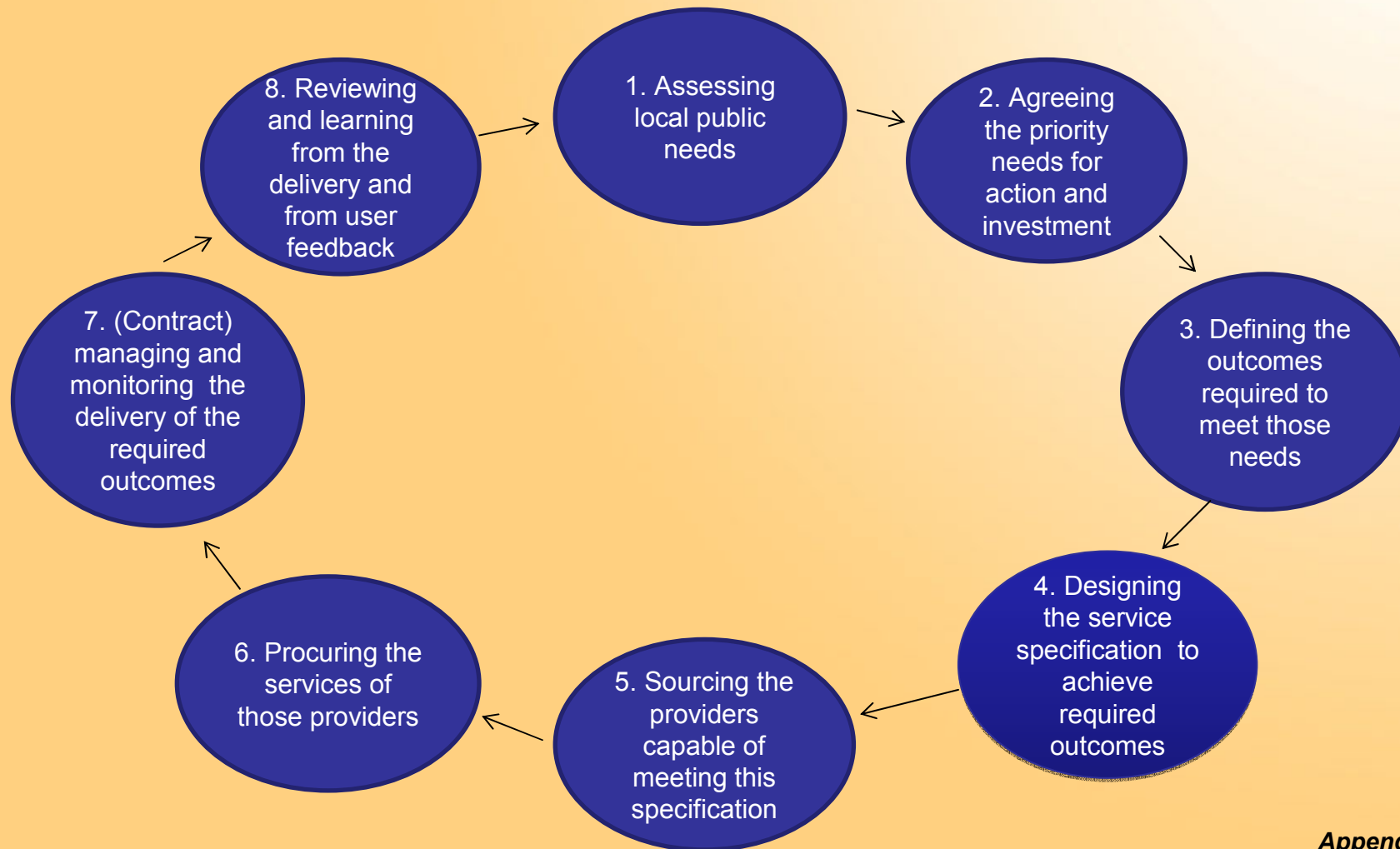


## LEADERSHIP TRUST AND ENGAGEMENT

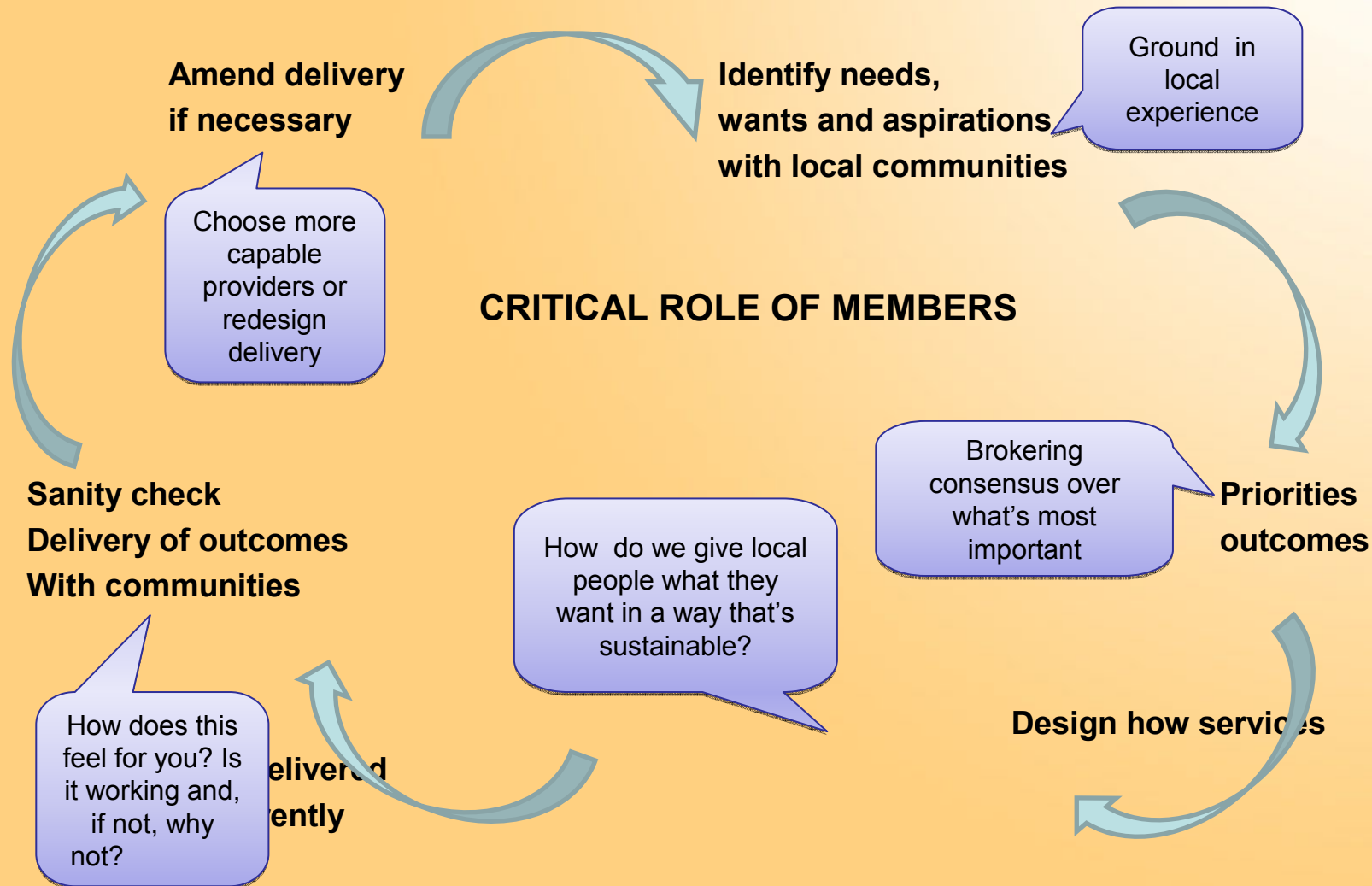


## NEW FUNDING SOURCES AND NEW DELIVERY VEHICLES

# The Strategic Commissioning Cycle



# Why the Members' role is critical

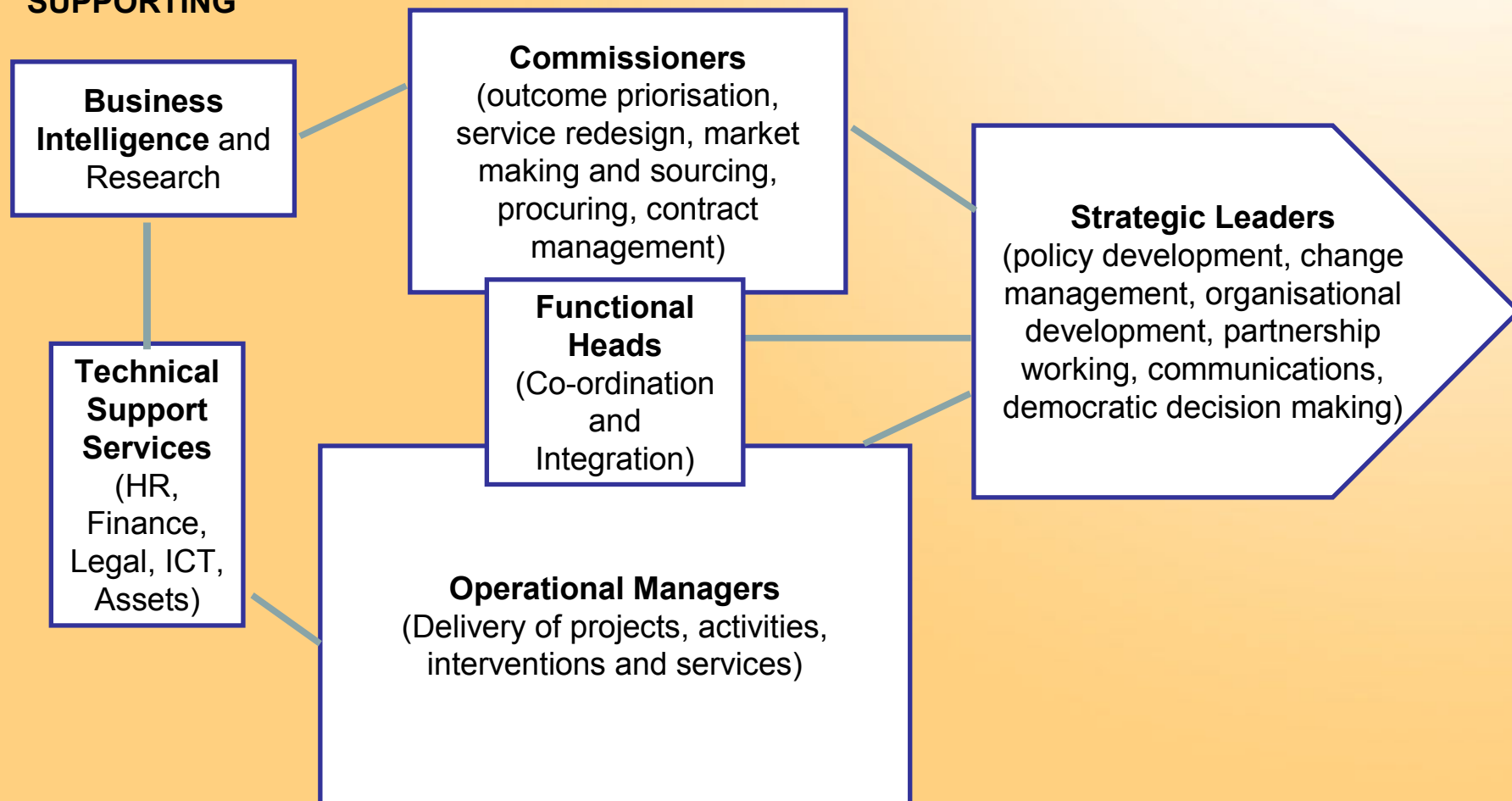


# The New Operating Model

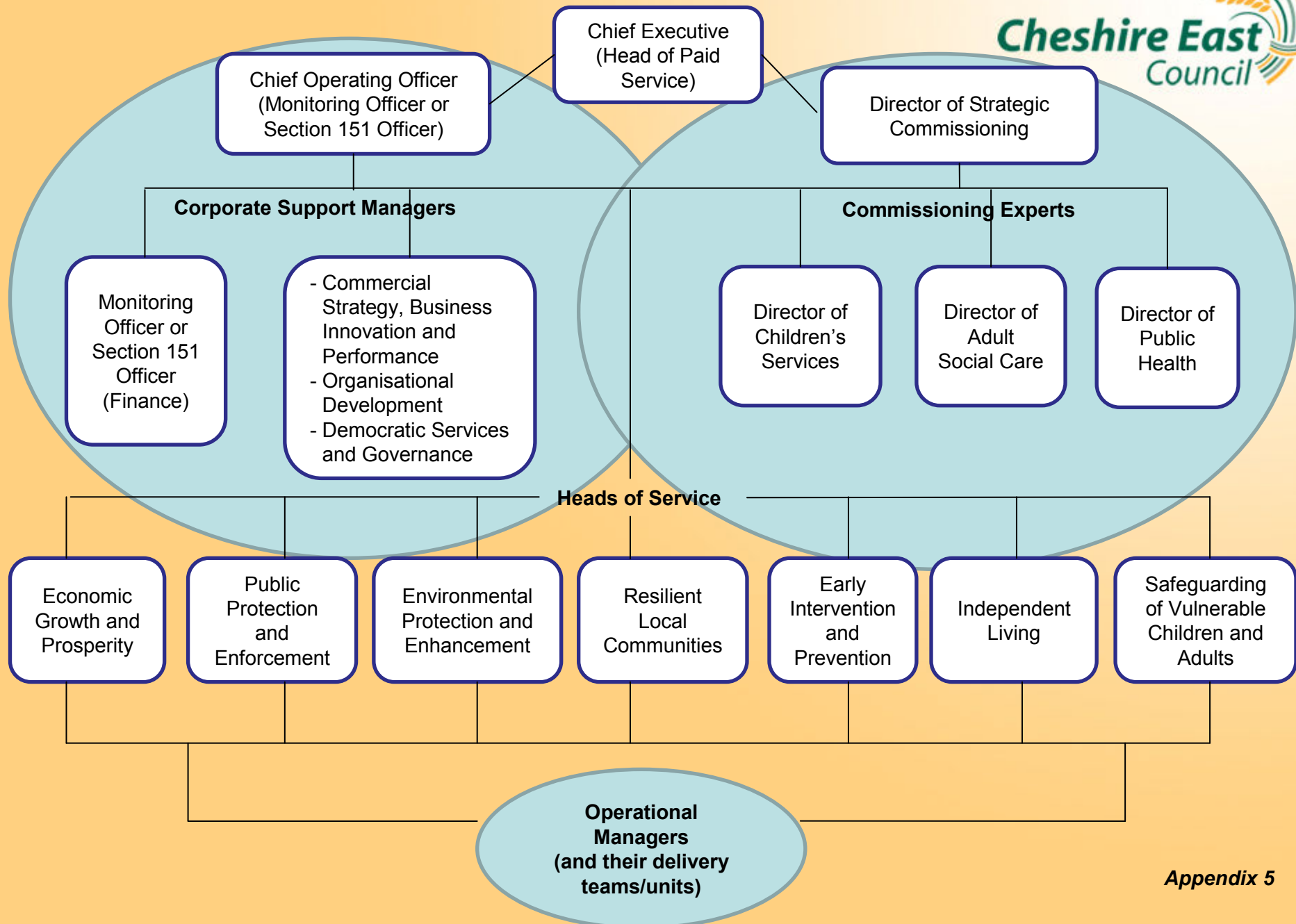
**DRIVING AND SUPPORTING**

**DOING**

**LEADING**



# The Council's new Corporate "Core"



# Commissioning – setting our priorities

