



SK10

	Category A8				Category A19				Category B19				Category C60			
	TOTAL	0-8	% 0-8	8+	TOTAL	0-19	% 0-19	19+	TOTAL	0-19	% 0-19	19+	TOTAL	0-60	% 0-60	60+
Apr-10	127	93	73.23%	34	125	116	92.80%	9	102	85	83.33%	17	35	33	94.29%	2
May-10	122	101	82.79%	21	119	111	93.28%	8	118	106	89.83%	12	46	46	100.00%	0
Jun-10	116	85	73.28%	31	116	110	94.83%	6	107	92	85.98%	15	35	35	100.00%	0
Jul-10	118	82	69.49%	36	118	116	98.31%	2	121	108	89.26%	13	42	42	100.00%	0
Aug-10	129	102	79.07%	27	128	122	95.31%	6	104	92	88.46%	12	40	39	97.50%	1
Sep-10	110	77	70.00%	33	110	104	94.55%	6	130	114	87.69%	16	42	40	95.24%	2
Oct-10	145	104	71.72%	41	142	139	97.89%	3	115	100	86.96%	15	39	39	100.00%	0
Nov-10	133	95	71.43%	38	133	127	95.49%	6	115	95	82.61%	20	52	51	98.08%	1
Dec-10	146	81	55.48%	65	145	131	90.34%	14	134	113	84.33%	21	46	42	91.30%	4
Jan-11	158	106	67.09%	52	157	143	91.08%	14	138	117	84.78%	21	37	35	94.59%	2
Feb-11	125	92	73.60%	33	125	122	97.60%	3	99	90	90.91%	9	30	30	100.00%	0
Mar-11	135	98	72.59%	37	134	129	96.27%	5	125	112	89.60%	13	47	46	97.87%	1
Apr-11	117	85	72.65%	32	116	112	96.55%	4	135	121	89.63%	14	31	29	93.55%	2
TOTAL	1,681	1,201	71.45%	480	1,668	1,582	94.84%	86	1,543	1,345	87.17%	198	522	507	97.13%	15

SK9

	Category A8				Category A19				Category B19				Category C60			
	TOTAL	0-8	% 0-8	8+	TOTAL	0-19	% 0-19	19+	TOTAL	0-19	% 0-19	19+	TOTAL	0-60	% 0-60	60+
Apr-10	108	62	57.41%	46	108	96	88.89%	12	126	93	73.81%	33	41	41	100.00%	0
May-10	124	78	62.90%	46	124	119	95.97%	5	137	110	80.29%	27	58	57	98.28%	1
Jun-10	119	69	57.98%	50	118	104	88.14%	14	136	113	83.09%	23	40	39	97.50%	1
Jul-10	112	61	54.46%	51	112	102	91.07%	10	158	129	81.65%	29	51	49	96.08%	2
Aug-10	110	69	62.73%	41	110	104	94.55%	6	123	94	76.42%	29	41	40	97.56%	1
Sep-10	112	66	58.93%	46	110	93	84.55%	17	146	111	76.03%	35	54	51	94.44%	3
Oct-10	109	69	63.30%	40	109	101	92.66%	8	148	118	79.73%	30	53	52	98.11%	1
Nov-10	110	60	54.55%	50	109	92	84.40%	17	149	115	77.18%	34	51	49	96.08%	2
Dec-10	128	55	42.97%	73	128	102	79.69%	26	154	97	62.99%	57	52	48	92.31%	4
Jan-11	113	64	56.64%	49	113	109	96.46%	4	133	109	81.95%	24	55	52	94.55%	3
Feb-11	106	67	63.21%	39	106	98	92.45%	8	108	93	86.11%	15	32	32	100.00%	0
Mar-11	117	77	65.81%	40	117	110	94.02%	7	147	120	81.63%	27	45	43	95.56%	2
Apr-11	107	66	61.68%	41	106	97	91.51%	9	172	145	84.30%	27	34	34	100.00%	0
TOTAL	1,475	863	58.51%	612	1,470	1,327	90.27%	143	1,837	1,447	78.77%	390	607	587	96.71%	20

WA16

	Category A8				Category A19				Category B19				Category C60			
	TOTAL	0-8	% 0-8	8+	TOTAL	0-19	% 0-19	19+	TOTAL	0-19	% 0-19	19+	TOTAL	0-60	% 0-60	60+
Apr-10	91	39	42.86%	52	91	80	87.91%	11	93	70	75.27%	23	23	22	95.65%	1
May-10	73	28	38.36%	45	72	68	94.44%	4	77	58	75.32%	19	33	31	93.94%	2
Jun-10	72	34	47.22%	38	72	65	90.28%	7	85	74	87.06%	11	28	28	100.00%	0
Jul-10	94	50	53.19%	44	93	85	91.40%	8	82	65	79.27%	17	22	22	100.00%	0
Aug-10	92	45	48.91%	47	92	83	90.22%	9	94	74	78.72%	20	24	23	95.83%	1
Sep-10	95	41	43.16%	54	94	85	90.43%	9	81	68	83.95%	13	37	33	89.19%	4
Oct-10	88	33	37.50%	55	88	80	90.91%	8	96	67	69.79%	29	34	34	100.00%	0
Nov-10	52	11	21.15%	41	51	44	86.27%	7	89	64	71.91%	25	19	18	94.74%	1
Dec-10	81	20	24.69%	61	81	64	79.01%	17	95	63	66.32%	32	31	29	93.55%	2
Jan-11	87	30	34.48%	57	87	76	87.36%	11	82	60	73.17%	22	24	24	100.00%	0
Feb-11	49	19	38.78%	30	49	46	93.88%	3	83	74	89.16%	9	19	18	94.74%	1
Mar-11	88	33	37.50%	55	88	85	96.59%	3	62	51	82.26%	11	18	18	100.00%	0
Apr-11	75	35	46.67%	40	75	71	94.67%	4	119	97	81.51%	22	16	16	100.00%	0
TOTAL	1,037	418	40.31%	619	1,033	932	90.22%	101	1,138	885	77.77%	253	328	316	96.34%	12



CW1

	Category A8				Category A19				Category B19				Category C60			
	TOTAL	0-8	% 0-8	8+	TOTAL	0-19	% 0-19	19+	TOTAL	0-19	% 0-19	19+	TOTAL	0-60	% 0-60	60+
Apr-10	188	169	89.89%	19	187	175	93.58%	12	127	119	93.70%	8	57	55	96.49%	2
May-10	179	166	92.74%	13	178	171	96.07%	7	153	145	94.77%	8	57	57	100.00%	0
Jun-10	174	164	94.25%	10	174	170	97.70%	4	171	167	97.66%	4	52	52	100.00%	0
Jul-10	190	171	90.00%	19	190	187	98.42%	3	135	127	94.07%	8	46	46	100.00%	0
Aug-10	189	176	93.12%	13	188	187	99.47%	1	189	180	95.24%	9	71	70	98.59%	1
Sep-10	185	163	88.11%	22	184	176	95.65%	8	180	164	91.11%	16	60	58	96.67%	2
Oct-10	225	203	90.22%	22	222	211	95.05%	11	211	195	92.42%	16	66	63	95.45%	3
Nov-10	190	159	83.68%	31	190	179	94.21%	11	207	182	87.92%	25	60	58	96.67%	2
Dec-10	238	179	75.21%	59	235	212	90.21%	23	237	212	89.45%	25	62	61	98.39%	1
Jan-11	200	183	91.50%	17	200	189	94.50%	11	199	187	93.97%	12	62	59	95.16%	3
Feb-11	190	169	88.95%	21	190	186	97.89%	4	165	156	94.55%	9	56	55	98.21%	1
Mar-11	258	238	92.25%	20	256	245	95.70%	11	201	189	94.03%	12	56	55	98.21%	1
Apr-11	193	169	87.56%	24	193	189	97.93%	4	190	174	91.58%	16	37	37	100.00%	0
TOTAL	2,599	2,309	88.84%	290	2,587	2,477	95.75%	110	2,365	2,197	92.90%	168	742	726	97.84%	16

SK11

	Category A8				Category A19				Category B19				Category C60			
	TOTAL	0-8	% 0-8	8+	TOTAL	0-19	% 0-19	19+	TOTAL	0-19	% 0-19	19+	TOTAL	0-60	% 0-60	60+
Apr-10	116	80	68.97%	36	116	111	95.69%	5	118	101	85.59%	17	56	55	98.21%	1
May-10	141	111	78.72%	30	141	137	97.16%	4	140	129	92.14%	11	47	45	95.74%	2
Jun-10	126	93	73.81%	33	126	124	98.41%	2	141	132	93.62%	9	46	46	100.00%	0
Jul-10	105	85	80.95%	20	105	101	96.19%	4	131	118	90.08%	13	50	49	98.00%	1
Aug-10	132	108	81.82%	24	132	130	98.48%	2	145	124	85.52%	21	48	47	97.92%	1
Sep-10	156	112	71.79%	44	156	148	94.87%	8	139	119	85.61%	20	59	56	94.92%	3
Oct-10	134	101	75.37%	33	134	132	98.51%	2	155	143	92.26%	12	47	45	95.74%	2
Nov-10	115	77	66.96%	38	115	111	96.52%	4	152	135	88.82%	17	50	48	96.00%	2
Dec-10	156	106	67.95%	50	156	151	96.79%	5	166	140	84.34%	26	51	50	98.04%	1
Jan-11	139	110	79.14%	29	139	138	99.28%	1	120	113	94.17%	7	51	48	94.12%	3
Feb-11	116	78	67.24%	38	116	107	92.24%	9	125	114	91.20%	11	45	45	100.00%	0
Mar-11	115	88	76.52%	27	115	110	95.65%	5	137	130	94.89%	7	47	47	100.00%	0
Apr-11	137	114	83.21%	23	137	132	96.35%	5	131	120	91.60%	11	25	25	100.00%	0
TOTAL	1,688	1,263	74.82%	425	1,688	1,632	96.68%	56	1,800	1,618	89.89%	182	622	606	97.43%	16

CW2

	Category A8				Category A19				Category B19				Category C60			
	TOTAL	0-8	% 0-8	8+	TOTAL	0-19	% 0-19	19+	TOTAL	0-19	% 0-19	19+	TOTAL	0-60	% 0-60	60+
Apr-10	118	102	86.44%	16	117	116	99.15%	1	137	123	89.78%	14	43	40	93.02%	3
May-10	131	117	89.31%	14	131	129	98.47%	2	154	138	89.61%	16	54	52	96.30%	2
Jun-10	116	100	86.21%	16	116	115	99.14%	1	146	130	89.04%	16	49	46	93.88%	3
Jul-10	122	107	87.70%	15	122	121	99.18%	1	152	142	93.42%	10	43	43	100.00%	0
Aug-10	146	121	82.88%	25	146	144	98.63%	2	154	140	90.91%	14	54	54	100.00%	0
Sep-10	140	109	77.86%	31	140	136	97.14%	4	129	110	85.27%	19	41	34	82.93%	7
Oct-10	142	124	87.32%	18	142	140	98.59%	2	143	132	92.31%	11	57	55	96.49%	2
Nov-10	129	92	71.32%	37	129	127	98.45%	2	148	120	81.08%	28	41	40	97.56%	1
Dec-10	163	109	66.87%	54	163	151	92.64%	12	136	119	87.50%	17	41	39	95.12%	2
Jan-11	114	96	84.21%	18	114	111	97.37%	3	141	128	90.78%	13	49	49	100.00%	0
Feb-11	114	98	85.96%	16	114	111	97.37%	3	137	127	92.70%	10	46	46	100.00%	0
Mar-11	117	93	79.49%	24	117	116	99.15%	1	153	137	89.54%	16	40	38	95.00%	2
Apr-11	130	120	92.31%	10	130	129	99.23%	1	155	144	92.90%	11	34	33	97.06%	1
TOTAL	1,682	1,388	82.52%	294	1,681	1,646	97.92%	35	1,885	1,690	89.66%	195	592	569	96.11%	23



CW12

	Category A8				Category A19				Category B19				Category C60			
	TOTAL	0-8	% 0-8	8+	TOTAL	0-19	% 0-19	19+	TOTAL	0-19	% 0-19	19+	TOTAL	0-60	% 0-60	60+
Apr-10	95	63	66.32%	32	95	88	92.63%	7	85	71	83.53%	14	48	46	95.83%	2
May-10	116	85	73.28%	31	116	112	96.55%	4	92	85	92.39%	7	47	46	97.87%	1
Jun-10	85	57	67.06%	28	85	82	96.47%	3	87	78	89.66%	9	36	35	97.22%	1
Jul-10	106	83	78.30%	23	106	102	96.23%	4	111	101	90.99%	10	30	30	100.00%	0
Aug-10	91	60	65.93%	31	91	89	97.80%	2	124	108	87.10%	16	30	30	100.00%	0
Sep-10	94	66	70.21%	28	94	86	91.49%	8	92	77	83.70%	15	42	40	95.24%	2
Oct-10	109	72	66.06%	37	109	103	94.50%	6	111	97	87.39%	14	46	44	95.65%	2
Nov-10	114	74	64.91%	40	114	107	93.86%	7	104	89	85.58%	15	38	37	97.37%	1
Dec-10	128	76	59.38%	52	128	115	89.84%	13	112	93	83.04%	19	37	36	97.30%	1
Jan-11	118	85	72.03%	33	118	112	94.92%	6	121	106	87.60%	15	33	31	93.94%	2
Feb-11	95	64	67.37%	31	95	92	96.84%	3	96	85	88.54%	11	36	34	94.44%	2
Mar-11	89	70	78.65%	19	89	87	97.75%	2	105	95	90.48%	10	37	37	100.00%	0
Apr-11	91	62	68.13%	29	91	85	93.41%	6	116	106	91.38%	10	34	33	97.06%	1
TOTAL	1,331	917	68.90%	414	1,331	1,260	94.67%	71	1,356	1,191	87.83%	165	494	479	96.96%	15

CW5

	Category A8				Category A19				Category B19				Category C60			
	TOTAL	0-8	% 0-8	8+	TOTAL	0-19	% 0-19	19+	TOTAL	0-19	% 0-19	19+	TOTAL	0-60	% 0-60	60+
Apr-10	94	73	77.66%	21	93	88	94.62%	5	93	86	92.47%	7	46	42	91.30%	4
May-10	71	54	76.06%	17	71	67	94.37%	4	96	87	90.63%	9	40	39	97.50%	1
Jun-10	89	71	79.78%	18	89	84	94.38%	5	73	65	89.04%	8	30	30	100.00%	0
Jul-10	88	70	79.55%	18	88	86	97.73%	2	72	53	73.61%	19	34	34	100.00%	0
Aug-10	94	76	80.85%	18	93	90	96.77%	3	84	75	89.29%	9	30	29	96.67%	1
Sep-10	100	74	74.00%	26	100	94	94.00%	6	109	92	84.40%	17	31	31	100.00%	0
Oct-10	115	92	80.00%	23	115	108	93.91%	7	91	76	83.52%	15	43	42	97.67%	1
Nov-10	93	69	74.19%	24	93	90	96.77%	3	98	81	82.65%	17	41	39	95.12%	2
Dec-10	116	77	66.38%	39	116	109	93.97%	7	142	107	75.35%	35	40	38	95.00%	2
Jan-11	94	72	76.60%	22	94	92	97.87%	2	102	90	88.24%	12	40	39	97.50%	1
Feb-11	83	62	74.70%	21	83	79	95.18%	4	101	95	94.06%	6	26	22	84.62%	4
Mar-11	112	93	83.04%	19	112	108	96.43%	4	104	92	88.46%	12	32	32	100.00%	0
Apr-11	79	66	83.54%	13	79	77	97.47%	2	128	116	90.63%	12	21	21	100.00%	0
TOTAL	1,228	949	77.28%	279	1,226	1,172	95.60%	54	1,293	1,115	86.23%	178	454	438	96.48%	16

CW11

	Category A8				Category A19				Category B19				Category C60			
	TOTAL	0-8	% 0-8	8+	TOTAL	0-19	% 0-19	19+	TOTAL	0-19	% 0-19	19+	TOTAL	0-60	% 0-60	60+
Apr-10	64	29	45.31%	35	64	62	96.88%	2	79	69	87.34%	10	38	37	97.37%	1
May-10	68	45	66.18%	23	68	68	100.00%	0	75	69	92.00%	6	21	21	100.00%	0
Jun-10	52	36	69.23%	16	52	51	98.08%	1	68	60	88.24%	8	20	20	100.00%	0
Jul-10	56	41	73.21%	15	56	56	100.00%	0	69	65	94.20%	4	28	26	92.86%	2
Aug-10	63	44	69.84%	19	63	63	100.00%	0	68	64	94.12%	4	22	22	100.00%	0
Sep-10	56	35	62.50%	21	56	55	98.21%	1	87	72	82.76%	15	27	24	88.89%	3
Oct-10	53	30	56.60%	23	53	52	98.11%	1	60	55	91.67%	5	21	20	95.24%	1
Nov-10	64	39	60.94%	25	64	62	96.88%	2	86	71	82.56%	15	21	19	90.48%	2
Dec-10	62	38	61.29%	24	62	61	98.39%	1	85	70	82.35%	15	35	32	91.43%	3
Jan-11	66	47	71.21%	19	66	66	100.00%	0	56	52	92.86%	4	18	17	94.44%	1
Feb-11	50	31	62.00%	19	50	46	92.00%	4	62	56	90.32%	6	20	19	95.00%	1
Mar-11	64	42	65.63%	22	64	64	100.00%	0	80	78	97.50%	2	14	13	92.86%	1
Apr-11	52	33	63.46%	19	52	52	100.00%	0	82	77	93.90%	5	15	14	93.33%	1
TOTAL	770	490	63.64%	280	770	758	98.44%	12	957	858	89.66%	99	300	284	94.67%	16



ST7

	Category A8				Category A19				Category B19				Category C60			
	TOTAL	0-8	% 0-8	8+	TOTAL	0-19	% 0-19	19+	TOTAL	0-19	% 0-19	19+	TOTAL	0-60	% 0-60	60+
Apr-10	47	7	14.89%	40	47	41	87.23%	6	72	60	83.33%	12	21	21	100.00%	0
May-10	49	17	34.69%	32	49	46	93.88%	3	69	64	92.75%	5	21	20	95.24%	1
Jun-10	40	5	12.50%	35	40	38	95.00%	2	67	54	80.60%	13	15	15	100.00%	0
Jul-10	46	15	32.61%	31	46	43	93.48%	3	66	59	89.39%	7	17	17	100.00%	0
Aug-10	49	20	40.82%	29	49	49	100.00%	0	56	44	78.57%	12	18	18	100.00%	0
Sep-10	65	16	24.62%	49	65	61	93.85%	4	65	49	75.38%	16	38	33	86.84%	5
Oct-10	60	29	48.33%	31	60	58	96.67%	2	75	59	78.67%	16	48	42	87.50%	6
Nov-10	50	21	42.00%	29	50	45	90.00%	5	66	51	77.27%	15	33	33	100.00%	0
Dec-10	65	23	35.38%	42	65	56	86.15%	9	68	52	76.47%	16	30	29	96.67%	1
Jan-11	50	11	22.00%	39	50	48	96.00%	2	63	56	88.89%	7	17	16	94.12%	1
Feb-11	37	16	43.24%	21	37	36	97.30%	1	64	57	89.06%	7	20	18	90.00%	2
Mar-11	58	21	36.21%	37	58	58	100.00%	0	63	56	88.89%	7	11	10	90.91%	1
Apr-11	41	11	26.83%	30	41	41	100.00%	0	60	49	81.67%	11	14	13	92.86%	1
TOTAL	657	212	32.27%	445	657	620	94.37%	37	854	710	83.14%	144	303	285	94.06%	18

SK12

	Category A8				Category A19				Category B19				Category C60			
	TOTAL	0-8	% 0-8	8+	TOTAL	0-19	% 0-19	19+	TOTAL	0-19	% 0-19	19+	TOTAL	0-60	% 0-60	60+
Apr-10	46	9	19.57%	37	43	40	93.02%	3	48	36	75.00%	12	10	10	100.00%	0
May-10	44	10	22.73%	34	44	37	84.09%	7	41	35	85.37%	6	12	12	100.00%	0
Jun-10	53	13	24.53%	40	51	45	88.24%	6	43	30	69.77%	13	15	14	93.33%	1
Jul-10	42	11	26.19%	31	42	36	85.71%	6	39	29	74.36%	10	8	7	87.50%	1
Aug-10	28	7	25.00%	21	28	24	85.71%	4	47	36	76.60%	11	12	12	100.00%	0
Sep-10	47	8	17.02%	39	45	35	77.78%	10	47	35	74.47%	12	16	14	87.50%	2
Oct-10	53	10	18.87%	43	50	36	72.00%	14	57	41	71.93%	16	21	17	80.95%	4
Nov-10	49	11	22.45%	38	49	42	85.71%	7	55	30	54.55%	25	16	13	81.25%	3
Dec-10	55	12	21.82%	43	55	37	67.27%	18	58	39	67.24%	19	14	14	100.00%	0
Jan-11	58	14	24.14%	44	58	52	89.66%	6	65	40	61.54%	25	18	17	94.44%	1
Feb-11	43	12	27.91%	31	43	39	90.70%	4	50	34	68.00%	16	12	10	83.33%	2
Mar-11	38	16	42.11%	22	37	35	94.59%	2	54	40	74.07%	14	27	27	100.00%	0
Apr-11	57	14	24.56%	43	57	51	89.47%	6	62	43	69.35%	19	12	11	91.67%	1
TOTAL	613	147	23.98%	466	602	509	84.55%	93	666	468	70.27%	198	193	178	92.23%	15

CW10

	Category A8				Category A19				Category B19				Category C60			
	TOTAL	0-8	% 0-8	8+	TOTAL	0-19	% 0-19	19+	TOTAL	0-19	% 0-19	19+	TOTAL	0-60	% 0-60	60+
Apr-10	33	10	30.30%	23	33	33	100.00%	0	47	41	87.23%	6	19	16	84.21%	3
May-10	37	12	32.43%	25	37	37	100.00%	0	38	33	86.84%	5	19	19	100.00%	0
Jun-10	30	17	56.67%	13	30	30	100.00%	0	51	41	80.39%	10	11	11	100.00%	0
Jul-10	50	30	60.00%	20	50	50	100.00%	0	44	43	97.73%	1	23	23	100.00%	0
Aug-10	35	17	48.57%	18	35	34	97.14%	1	50	46	92.00%	4	16	16	100.00%	0
Sep-10	46	23	50.00%	23	46	43	93.48%	3	55	45	81.82%	10	15	15	100.00%	0
Oct-10	37	14	37.84%	23	37	36	97.30%	1	42	37	88.10%	5	18	18	100.00%	0
Nov-10	42	13	30.95%	29	42	41	97.62%	1	46	39	84.78%	7	10	8	80.00%	2
Dec-10	56	20	35.71%	36	56	53	94.64%	3	52	41	78.85%	11	10	9	90.00%	1
Jan-11	36	20	55.56%	16	36	36	100.00%	0	51	46	90.20%	5	16	16	100.00%	0
Feb-11	47	26	55.32%	21	47	46	97.87%	1	37	30	81.08%	7	13	13	100.00%	0
Mar-11	59	39	66.10%	20	59	58	98.31%	1	46	43	93.48%	3	15	15	100.00%	0
Apr-11	51	32	62.75%	19	51	51	100.00%	0	51	48	94.12%	3	7	7	100.00%	0
TOTAL	559	273	48.84%	286	559	548	98.03%	11	610	533	87.38%	77	192	186	96.88%	6



CW4

	Category A8				Category A19				Category B19				Category C60			
	TOTAL	0-8	% 0-8	8+	TOTAL	0-19	% 0-19	19+	TOTAL	0-19	% 0-19	19+	TOTAL	0-60	% 0-60	60+
Apr-10	32	8	25.00%	24	32	31	96.88%	1	30	28	93.33%	2	9	8	88.89%	1
May-10	21	7	33.33%	14	21	20	95.24%	1	20	16	80.00%	4	13	13	100.00%	0
Jun-10	26	10	38.46%	16	26	25	96.15%	1	31	30	96.77%	1	7	7	100.00%	0
Jul-10	20	8	40.00%	12	20	19	95.00%	1	27	25	92.59%	2	8	8	100.00%	0
Aug-10	15	6	40.00%	9	15	14	93.33%	1	30	26	86.67%	4	8	7	87.50%	1
Sep-10	24	5	20.83%	19	24	23	95.83%	1	27	22	81.48%	5	9	9	100.00%	0
Oct-10	21	4	19.05%	17	21	20	95.24%	1	26	24	92.31%	2	6	6	100.00%	0
Nov-10	19	5	26.32%	14	19	18	94.74%	1	25	22	88.00%	3	10	10	100.00%	0
Dec-10	15	2	13.33%	13	15	13	86.67%	2	33	20	60.61%	13	5	5	100.00%	0
Jan-11	33	5	15.15%	28	33	31	93.94%	2	19	18	94.74%	1	9	9	100.00%	0
Feb-11	20	2	10.00%	18	20	19	95.00%	1	28	27	96.43%	1	6	6	100.00%	0
Mar-11	20	7	35.00%	13	20	20	100.00%	0	21	20	95.24%	1	15	15	100.00%	0
Apr-11	29	7	24.14%	22	29	29	100.00%	0	38	37	97.37%	1	9	9	100.00%	0
TOTAL	295	76	25.76%	219	295	282	95.59%	13	355	315	88.73%	40	114	112	98.25%	2

CW3

	Category A8				Category A19				Category B19				Category C60			
	TOTAL	0-8	% 0-8	8+	TOTAL	0-19	% 0-19	19+	TOTAL	0-19	% 0-19	19+	TOTAL	0-60	% 0-60	60+
Apr-10	6	1	16.67%	5	6	5	83.33%	1	5	1	20.00%	4	5	5	100.00%	0
May-10	8	2	25.00%	6	8	7	87.50%	1	9	7	77.78%	2	2	2	100.00%	0
Jun-10	9	3	33.33%	6	9	5	55.56%	4	9	6	66.67%	3	3	3	100.00%	0
Jul-10	4	0	0%	4	4	4	100.00%	0	7	2	28.57%	5	2	2	100.00%	0
Aug-10	6	1	16.67%	5	6	5	83.33%	1	16	10	62.50%	6	1	1	100.00%	0
Sep-10	5	0	0%	5	5	2	40.00%	3	3	2	66.67%	1	2	1	50.00%	1
Oct-10	10	2	20.00%	8	10	9	90.00%	1	10	6	60.00%	4	3	1	33.33%	2
Nov-10	7	2	28.57%	5	7	5	71.43%	2	8	4	50.00%	4	3	3	100.00%	0
Dec-10	11	4	36.36%	7	11	8	72.73%	3	5	2	40.00%	3	3	3	100.00%	0
Jan-11	9	3	33.33%	6	9	8	88.89%	1	9	5	55.56%	4	3	1	33.33%	2
Feb-11	7	2	28.57%	5	7	7	100.00%	0	8	5	62.50%	3	3	3	100.00%	0
Mar-11	10	3	30.00%	7	10	8	80.00%	2	6	5	83.33%	1	3	3	100.00%	0
Apr-11	10	4	40.00%	6	10	10	100.00%	0	2	1	50.00%	1	1	1	100.00%	0
TOTAL	102	27	26.47%	75	102	83	81.37%	19	97	56	57.73%	41	34	29	85.29%	5

CW6

	Category A8				Category A19				Category B19				Category C60			
	TOTAL	0-8	% 0-8	8+	TOTAL	0-19	% 0-19	19+	TOTAL	0-19	% 0-19	19+	TOTAL	0-60	% 0-60	60+
Apr-10	32	6	18.75%	26	32	28	87.50%	4	31	25	80.65%	6	12	11	91.67%	1
May-10	37	9	24.32%	28	36	30	83.33%	6	39	32	82.05%	7	11	10	90.91%	1
Jun-10	28	8	28.57%	20	28	28	100.00%	0	40	32	80.00%	8	9	9	100.00%	0
Jul-10	27	6	22.22%	21	27	23	85.19%	4	53	44	83.02%	9	11	11	100.00%	0
Aug-10	34	11	32.35%	23	34	29	85.29%	5	26	18	69.23%	8	18	18	100.00%	0
Sep-10	29	8	27.59%	21	29	23	79.31%	6	27	15	55.56%	12	11	10	90.91%	1
Oct-10	32	7	21.88%	25	32	29	90.63%	3	38	24	63.16%	14	18	18	100.00%	0
Nov-10	29	4	13.79%	25	29	23	79.31%	6	38	21	55.26%	17	9	9	100.00%	0
Dec-10	29	1	3.45%	28	29	23	79.31%	6	31	22	70.97%	9	21	18	85.71%	3
Jan-11	26	4	15.38%	22	26	21	80.77%	5	28	25	89.29%	3	12	11	91.67%	1
Feb-11	29	4	13.79%	25	29	24	82.76%	5	26	21	80.77%	5	8	8	100.00%	0
Mar-11	30	7	23.33%	23	29	25	86.21%	4	35	26	74.29%	9	8	8	100.00%	0
Apr-11	33	10	30.30%	23	32	31	96.88%	1	41	32	78.05%	9	5	5	100.00%	0
TOTAL	395	85	21.52%	310	392	337	85.97%	55	453	337	74.39%	116	153	146	95.42%	7



SY13

	Category A8				Category A19				Category B19				Category C60			
	TOTAL	0-8	% 0-8	8+	TOTAL	0-19	% 0-19	19+	TOTAL	0-19	% 0-19	19+	TOTAL	0-60	% 0-60	60+
Apr-10	1	1	100.00%	0	1	1	100.00%	0	4	1	25.00%	3	1	1	100.00%	0
May-10	2	1	50.00%	1	2	2	100.00%	0	1	1	100.00%	0	0	0	0%	0
Jun-10	1	0	0%	1	0	0	0%	0	2	2	100.00%	0	1	1	100.00%	0
Jul-10	3	0	0%	3	3	2	66.67%	1	1	0	0%	1	2	1	50.00%	1
Aug-10	1	0	0%	1	1	1	100.00%	0	1	1	100.00%	0	0	0	0%	0
Sep-10	2	1	50.00%	1	1	1	100.00%	0	1	0	0%	1	0	0	0%	0
Oct-10	4	0	0%	4	4	2	50.00%	2	0	0	0%	0	1	1	100.00%	0
Jan-11	1	0	0%	1	1	0	0%	1	1	1	100.00%	0	0	0	0%	0
Feb-11	1	1	100.00%	0	1	1	100.00%	0	2	1	50.00%	1	0	0	0%	0
Mar-11	1	0	0%	1	1	1	100.00%	0	0	0	0%	0	1	1	100.00%	0
Nov-10	0	0	0%	0	0	0	0%	0	1	0	0%	1	0	0	0%	0
Dec-10	0	0	0%	0	0	0	0%	0	3	1	33.33%	2	1	1	100.00%	0
Apr-11	0	0	0%	0	0	0	0%	0	4	3	75.00%	1	0	0	0%	0
TOTAL	17	4	23.53%	13	15	11	73.33%	4	21	11	52.38%	10	7	6	85.71%	1

WA14

	Category A8				Category A19				Category B19				Category C60			
	TOTAL	0-8	% 0-8	8+	TOTAL	0-19	% 0-19	19+	TOTAL	0-19	% 0-19	19+	TOTAL	0-60	% 0-60	60+
Apr-10	85	51	60.00%	34	84	82	97.62%	2	97	81	83.51%	16	34	34	100.00%	0
May-10	63	42	66.67%	21	63	61	96.83%	2	104	89	85.58%	15	25	24	96.00%	1
Jun-10	81	44	54.32%	37	81	80	98.77%	1	114	98	85.96%	16	28	26	92.86%	2
Jul-10	69	39	56.52%	30	68	67	98.53%	1	99	83	83.84%	16	28	27	96.43%	1
Aug-10	88	49	55.68%	39	87	84	96.55%	3	113	97	85.84%	16	45	42	93.33%	3
Sep-10	80	51	63.75%	29	80	75	93.75%	5	129	100	77.52%	29	42	40	95.24%	2
Oct-10	87	56	64.37%	31	87	85	97.70%	2	101	77	76.24%	24	46	40	86.96%	6
Nov-10	96	49	51.04%	47	95	83	87.37%	12	118	89	75.42%	29	39	36	92.31%	3
Dec-10	98	39	39.80%	59	98	82	83.67%	16	114	68	59.65%	46	40	25	62.50%	15
Jan-11	107	62	57.94%	45	107	105	98.13%	2	91	75	82.42%	16	34	29	85.29%	5
Feb-11	74	38	51.35%	36	74	72	97.30%	2	117	86	73.50%	31	27	21	77.78%	6
Mar-11	95	58	61.05%	37	95	93	97.89%	2	141	104	73.76%	37	41	33	80.49%	8
Apr-11	89	47	52.81%	42	89	81	91.01%	8	137	108	78.83%	29	37	31	83.78%	6
TOTAL	1,112	625	56.21%	487	1,108	1,050	94.77%	58	1,475	1,155	78.31%	320	466	408	87.55%	58

SY14

	Category A8				Category A19				Category B19				Category C60			
	TOTAL	0-8	% 0-8	8+	TOTAL	0-19	% 0-19	19+	TOTAL	0-19	% 0-19	19+	TOTAL	0-60	% 0-60	60+
Apr-10	8	4	50.00%	4	7	6	85.71%	1	13	11	84.62%	2	5	5	100.00%	0
May-10	11	2	18.18%	9	9	8	88.89%	1	15	7	46.67%	8	3	3	100.00%	0
Jun-10	12	0	0%	12	11	8	72.73%	3	18	9	50.00%	9	6	6	100.00%	0
Jul-10	10	2	20.00%	8	10	7	70.00%	3	9	8	88.89%	1	5	5	100.00%	0
Aug-10	15	5	33.33%	10	15	12	80.00%	3	11	10	90.91%	1	4	4	100.00%	0
Sep-10	7	1	14.29%	6	7	6	85.71%	1	4	3	75.00%	1	4	4	100.00%	0
Oct-10	11	3	27.27%	8	11	9	81.82%	2	17	10	58.82%	7	4	4	100.00%	0
Nov-10	14	2	14.29%	12	14	10	71.43%	4	10	4	40.00%	6	6	6	100.00%	0
Dec-10	12	1	8.33%	11	12	7	58.33%	5	14	8	57.14%	6	6	6	100.00%	0
Jan-11	11	2	18.18%	9	10	6	60.00%	4	17	7	41.18%	10	3	2	66.67%	1
Feb-11	7	1	14.29%	6	7	5	71.43%	2	14	6	42.86%	8	4	4	100.00%	0
Mar-11	13	2	15.38%	11	13	9	69.23%	4	13	11	84.62%	2	7	7	100.00%	0
Apr-11	7	3	42.86%	4	7	7	100.00%	0	13	3	23.08%	10	2	2	100.00%	0
TOTAL	138	28	20.29%	110	133	100	75.19%	33	168	97	57.74%	71	59	58	98.31%	1



WA15

	Category A8				Category A19				Category B19				Category C60			
	TOTAL	0-8	% 0-8	8+	TOTAL	0-19	% 0-19	19+	TOTAL	0-19	% 0-19	19+	TOTAL	0-60	% 0-60	60+
Apr-10	93	58	62.37%	35	90	89	98.89%	1	121	100	82.64%	21	41	36	87.80%	5
May-10	99	63	63.64%	36	94	93	98.94%	1	129	119	92.25%	10	36	34	94.44%	2
Jun-10	86	62	72.09%	24	83	82	98.80%	1	107	92	85.98%	15	45	44	97.78%	1
Jul-10	107	80	74.77%	27	102	101	99.02%	1	138	121	87.68%	17	45	44	97.78%	1
Aug-10	95	66	69.47%	29	93	92	98.92%	1	107	90	84.11%	17	38	37	97.37%	1
Sep-10	90	68	75.56%	22	88	87	98.86%	1	117	98	83.76%	19	53	49	92.45%	4
Oct-10	129	84	65.12%	45	127	118	92.91%	9	118	100	84.75%	18	50	47	94.00%	3
Nov-10	99	59	59.60%	40	96	93	96.88%	3	130	100	76.92%	30	31	27	87.10%	4
Dec-10	119	63	52.94%	56	114	102	89.47%	12	123	86	69.92%	37	33	26	78.79%	7
Jan-11	101	71	70.30%	30	100	98	98.00%	2	108	96	88.89%	12	32	27	84.38%	5
Feb-11	110	85	77.27%	25	108	107	99.07%	1	98	73	74.49%	25	50	44	88.00%	6
Mar-11	116	73	62.93%	43	114	110	96.49%	4	126	100	79.37%	26	41	33	80.49%	8
Apr-11	105	72	68.57%	33	104	100	96.15%	4	143	113	79.02%	30	34	30	88.24%	4
TOTAL	1,349	904	67.01%	445	1,313	1,272	96.88%	41	1,565	1,288	82.30%	277	529	478	90.36%	51

WA13

	Category A8				Category A19				Category B19				Category C60			
	TOTAL	0-8	% 0-8	8+	TOTAL	0-19	% 0-19	19+	TOTAL	0-19	% 0-19	19+	TOTAL	0-60	% 0-60	60+
Apr-10	24	4	16.67%	20	24	23	95.83%	1	33	26	78.79%	7	12	12	100.00%	0
May-10	23	7	30.43%	16	23	22	95.65%	1	33	27	81.82%	6	10	10	100.00%	0
Jun-10	32	8	25.00%	24	32	30	93.75%	2	34	25	73.53%	9	10	5	50.00%	5
Jul-10	30	12	40.00%	18	30	28	93.33%	2	30	23	76.67%	7	5	5	100.00%	0
Aug-10	27	7	25.93%	20	27	26	96.30%	1	45	40	88.89%	5	11	9	81.82%	2
Sep-10	26	2	7.69%	24	26	23	88.46%	3	43	31	72.09%	12	16	13	81.25%	3
Oct-10	41	8	19.51%	33	41	40	97.56%	1	38	30	78.95%	8	5	5	100.00%	0
Nov-10	21	2	9.52%	19	21	19	90.48%	2	45	31	68.89%	14	8	7	87.50%	1
Dec-10	45	6	13.33%	39	45	41	91.11%	4	36	27	75.00%	9	11	10	90.91%	1
Jan-11	44	8	18.18%	36	44	42	95.45%	2	37	30	81.08%	7	8	7	87.50%	1
Feb-11	21	0	0%	21	21	19	90.48%	2	29	24	82.76%	5	10	10	100.00%	0
Mar-11	33	12	36.36%	21	33	33	100.00%	0	33	26	78.79%	7	12	12	100.00%	0
Apr-11	23	6	26.09%	17	23	23	100.00%	0	30	26	86.67%	4	5	5	100.00%	0
TOTAL	390	82	21.03%	308	390	369	94.62%	21	466	366	78.54%	100	123	110	89.43%	13

SK23

	Category A8				Category A19				Category B19				Category C60			
	TOTAL	0-8	% 0-8	8+	TOTAL	0-19	% 0-19	19+	TOTAL	0-19	% 0-19	19+	TOTAL	0-60	% 0-60	60+
Aug-10	2	0	0%	2	2	2	100.00%	0	0	0	0%	0	0	0	0%	0
Jun-10	0	0	0%	0	0	0	0%	0	2	1	50.00%	1	0	0	0%	0
Jul-10	0	0	0%	0	0	0	0%	0	1	0	0%	1	0	0	0%	0
Nov-10	0	0	0%	0	0	0	0%	0	0	0	0%	0	0	0	0%	0
Dec-10	0	0	0%	0	0	0	0%	0	2	0	0%	2	0	0	0%	0
Jan-11	0	0	0%	0	0	0	0%	0	1	1	100.00%	0	1	1	100.00%	0
Feb-11	0	0	0%	0	0	0	0%	0	0	0	0%	0	1	1	100.00%	0
Apr-11	0	0	0%	0	0	0	0%	0	0	0	0%	0	0	0	0%	0
Apr-10	0	0	0%	0	0	0	0%	0	0	0	0%	0	1	1	100.00%	0
Sep-10	0	0	0%	0	0	0	0%	0	0	0	0%	0	1	1	100.00%	0
TOTAL	2	0	0%	2	2	2	100.00%	0	6	2	33.33%	4	4	4	100.00%	0



CW7

	Category A8				Category A19				Category B19				Category C60			
	TOTAL	0-8	% 0-8	8+	TOTAL	0-19	% 0-19	19+	TOTAL	0-19	% 0-19	19+	TOTAL	0-60	% 0-60	60+
Apr-10	105	62	59.05%	43	104	96	92.31%	8	116	97	83.62%	19	37	33	89.19%	4
May-10	113	73	64.60%	40	113	111	98.23%	2	126	112	88.89%	14	39	37	94.87%	2
Jun-10	98	45	45.92%	53	98	92	93.88%	6	117	96	82.05%	21	23	23	100.00%	0
Jul-10	105	59	56.19%	46	105	99	94.29%	6	126	113	89.68%	13	27	26	96.30%	1
Aug-10	113	65	57.52%	48	113	108	95.58%	5	121	109	90.08%	12	34	34	100.00%	0
Sep-10	133	61	45.86%	72	133	129	96.99%	4	100	82	82.00%	18	31	30	96.77%	1
Oct-10	149	90	60.40%	59	149	148	99.33%	1	107	91	85.05%	16	42	38	90.48%	4
Nov-10	130	63	48.46%	67	130	123	94.62%	7	108	88	81.48%	20	42	40	95.24%	2
Dec-10	162	61	37.65%	101	162	146	90.12%	16	125	93	74.40%	32	40	38	95.00%	2
Jan-11	141	99	70.21%	42	141	137	97.16%	4	120	110	91.67%	10	23	22	95.65%	1
Feb-11	116	83	71.55%	33	116	116	100.00%	0	108	100	92.59%	8	28	28	100.00%	0
Mar-11	112	61	54.46%	51	112	104	92.86%	8	111	104	93.69%	7	36	35	97.22%	1
Apr-11	126	96	76.19%	30	126	125	99.21%	1	138	127	92.03%	11	19	19	100.00%	0
TOTAL	1,603	918	57.27%	685	1,602	1,534	95.76%	68	1,523	1,322	86.80%	201	421	403	95.72%	18

CW9

	Category A8				Category A19				Category B19				Category C60			
	TOTAL	0-8	% 0-8	8+	TOTAL	0-19	% 0-19	19+	TOTAL	0-19	% 0-19	19+	TOTAL	0-60	% 0-60	60+
Apr-10	86	58	67.44%	28	86	80	93.02%	6	109	89	81.65%	20	35	34	97.14%	1
May-10	105	79	75.24%	26	105	96	91.43%	9	120	104	86.67%	16	38	38	100.00%	0
Jun-10	105	83	79.05%	22	105	101	96.19%	4	141	121	85.82%	20	36	34	94.44%	2
Jul-10	121	83	68.60%	38	121	118	97.52%	3	119	101	84.87%	18	50	49	98.00%	1
Aug-10	108	71	65.74%	37	108	102	94.44%	6	111	97	87.39%	14	43	41	95.35%	2
Sep-10	111	76	68.47%	35	111	98	88.29%	13	130	102	78.46%	28	35	32	91.43%	3
Oct-10	122	79	64.75%	43	122	111	90.98%	11	121	101	83.47%	20	44	42	95.45%	2
Nov-10	105	68	64.76%	37	105	99	94.29%	6	115	89	77.39%	26	36	34	94.44%	2
Dec-10	134	72	53.73%	62	134	120	89.55%	14	129	97	75.19%	32	44	41	93.18%	3
Jan-11	123	93	75.61%	30	123	120	97.56%	3	102	85	83.33%	17	42	38	90.48%	4
Feb-11	109	76	69.72%	33	109	99	90.83%	10	111	96	86.49%	15	38	35	92.11%	3
Mar-11	116	81	69.83%	35	116	107	92.24%	9	124	106	85.48%	18	48	46	95.83%	2
Apr-11	126	87	69.05%	39	126	121	96.03%	5	152	132	86.84%	20	28	28	100.00%	0
TOTAL	1,471	1,006	68.39%	465	1,471	1,372	93.27%	99	1,584	1,320	83.33%	264	517	492	95.16%	25

SK8

	Category A8				Category A19				Category B19				Category C60			
	TOTAL	0-8	% 0-8	8+	TOTAL	0-19	% 0-19	19+	TOTAL	0-19	% 0-19	19+	TOTAL	0-60	% 0-60	60+
Apr-10	123	99	80.49%	24	123	123	100.00%	0	175	164	93.71%	11	51	50	98.04%	1
May-10	170	132	77.65%	38	170	170	100.00%	0	197	185	93.91%	12	73	71	97.26%	2
Jun-10	154	108	70.13%	46	154	152	98.70%	2	201	188	93.53%	13	62	60	96.77%	2
Jul-10	148	112	75.68%	36	148	145	97.97%	3	167	156	93.41%	11	57	55	96.49%	2
Aug-10	153	122	79.74%	31	153	153	100.00%	0	182	173	95.05%	9	62	61	98.39%	1
Sep-10	138	91	65.94%	47	138	136	98.55%	2	181	157	86.74%	24	57	54	94.74%	3
Oct-10	192	140	72.92%	52	192	189	98.44%	3	182	159	87.36%	23	58	55	94.83%	3
Nov-10	162	113	69.75%	49	162	157	96.91%	5	213	181	84.98%	32	67	64	95.52%	3
Dec-10	223	127	56.95%	96	222	211	95.05%	11	205	143	69.76%	62	54	38	70.37%	16
Jan-11	165	123	74.55%	42	165	161	97.58%	4	191	161	84.29%	30	44	39	88.64%	5
Feb-11	137	91	66.42%	46	137	134	97.81%	3	171	149	87.13%	22	33	31	93.94%	2
Mar-11	191	126	65.97%	65	191	191	100.00%	0	197	167	84.77%	30	58	50	86.21%	8
Apr-11	136	88	64.71%	48	136	132	97.06%	4	192	164	85.42%	28	38	36	94.74%	2
TOTAL	2,092	1,472	70.36%	620	2,091	2,054	98.23%	37	2,454	2,147	87.49%	307	714	664	93.00%	50



SK6

	Category A8				Category A19				Category B19				Category C60			
	TOTAL	0-8	% 0-8	8+	TOTAL	0-19	% 0-19	19+	TOTAL	0-19	% 0-19	19+	TOTAL	0-60	% 0-60	60+
Apr-10	165	96	58.18%	69	164	160	97.56%	4	224	199	88.84%	25	59	58	98.31%	1
May-10	164	86	52.44%	78	163	162	99.39%	1	206	176	85.44%	30	63	55	87.30%	8
Jun-10	158	82	51.90%	76	158	155	98.10%	3	203	166	81.77%	37	54	50	92.59%	4
Jul-10	151	81	53.64%	70	151	147	97.35%	4	211	185	87.68%	26	46	45	97.83%	1
Aug-10	153	76	49.67%	77	152	149	98.03%	3	236	203	86.02%	33	56	54	96.43%	2
Sep-10	175	79	45.14%	96	175	173	98.86%	2	217	165	76.04%	52	43	40	93.02%	3
Oct-10	192	86	44.79%	106	192	182	94.79%	10	200	166	83.00%	34	84	75	89.29%	9
Nov-10	215	91	42.33%	124	215	201	93.49%	14	212	165	77.83%	47	63	58	92.06%	5
Dec-10	242	80	33.06%	162	242	215	88.84%	27	230	148	64.35%	82	58	37	63.79%	21
Jan-11	207	117	56.52%	90	207	204	98.55%	3	218	179	82.11%	39	79	72	91.14%	7
Feb-11	160	81	50.63%	79	160	152	95.00%	8	197	156	79.19%	41	63	56	88.89%	7
Mar-11	177	92	51.98%	85	177	173	97.74%	4	223	175	78.48%	48	61	55	90.16%	6
Apr-11	207	86	41.55%	121	207	203	98.07%	4	205	159	77.56%	46	38	36	94.74%	2
TOTAL	2,366	1,133	47.89%	1,233	2,363	2,276	96.32%	87	2,782	2,242	80.59%	540	767	691	90.09%	76

SK7

	Category A8				Category A19				Category B19				Category C60			
	TOTAL	0-8	% 0-8	8+	TOTAL	0-19	% 0-19	19+	TOTAL	0-19	% 0-19	19+	TOTAL	0-60	% 0-60	60+
Apr-10	110	73	66.36%	37	109	107	98.17%	2	110	100	90.91%	10	37	36	97.30%	1
May-10	100	63	63.00%	37	100	100	100.00%	0	120	110	91.67%	10	36	34	94.44%	2
Jun-10	90	59	65.56%	31	90	87	96.67%	3	120	106	88.33%	14	51	49	96.08%	2
Jul-10	108	67	62.04%	41	108	107	99.07%	1	114	100	87.72%	14	56	55	98.21%	1
Aug-10	89	53	59.55%	36	89	86	96.63%	3	106	92	86.79%	14	34	31	91.18%	3
Sep-10	109	58	53.21%	51	108	106	98.15%	2	117	92	78.63%	25	34	34	100.00%	0
Oct-10	121	67	55.37%	54	120	116	96.67%	4	147	126	85.71%	21	40	35	87.50%	5
Nov-10	92	45	48.91%	47	92	85	92.39%	7	144	123	85.42%	21	38	34	89.47%	4
Dec-10	126	55	43.65%	71	126	112	88.89%	14	145	97	66.90%	48	51	41	80.39%	10
Jan-11	104	64	61.54%	40	104	102	98.08%	2	128	100	78.13%	28	33	30	90.91%	3
Feb-11	100	67	67.00%	33	100	98	98.00%	2	120	96	80.00%	24	29	25	86.21%	4
Mar-11	101	69	68.32%	32	101	100	99.01%	1	118	96	81.36%	22	37	35	94.59%	2
Apr-11	103	59	57.28%	44	103	101	98.06%	2	155	136	87.74%	19	33	31	93.94%	2
TOTAL	1,353	799	59.05%	554	1,350	1,307	96.81%	43	1,644	1,374	83.58%	270	509	470	92.34%	39

M22

	Category A8				Category A19				Category B19				Category C60			
	TOTAL	0-8	% 0-8	8+	TOTAL	0-19	% 0-19	19+	TOTAL	0-19	% 0-19	19+	TOTAL	0-60	% 0-60	60+
Apr-10	336	316	94.05%	20	245	234	95.51%	11	207	191	92.27%	16	55	55	100.00%	0
May-10	445	389	87.42%	56	324	310	95.68%	14	228	211	92.54%	17	68	66	97.06%	2
Jun-10	387	355	91.73%	32	274	261	95.26%	13	275	242	88.00%	33	73	70	95.89%	3
Jul-10	396	359	90.66%	37	279	264	94.62%	15	249	237	95.18%	12	65	65	100.00%	0
Aug-10	402	376	93.53%	26	283	255	90.11%	28	265	248	93.58%	17	61	61	100.00%	0
Sep-10	393	360	91.60%	33	275	253	92.00%	22	256	227	88.67%	29	78	75	96.15%	3
Oct-10	419	376	89.74%	43	298	271	90.94%	27	265	237	89.43%	28	86	83	96.51%	3
Nov-10	353	316	89.52%	37	257	235	91.44%	22	232	187	80.60%	45	71	64	90.14%	7
Dec-10	454	354	77.97%	100	332	290	87.35%	42	260	186	71.54%	74	63	46	73.02%	17
Jan-11	401	349	87.03%	52	279	258	92.47%	21	257	221	85.99%	36	56	54	96.43%	2
Feb-11	313	282	90.10%	31	223	203	91.03%	20	197	176	89.34%	21	53	48	90.57%	5
Mar-11	370	331	89.46%	39	261	244	93.49%	17	230	200	86.96%	30	68	61	89.71%	7
Apr-11	348	314	90.23%	34	259	244	94.21%	15	242	206	85.12%	36	31	23	74.19%	8
TOTAL	5,017	4,477	89.24%	540	3,589	3,322	92.56%	267	3,163	2,769	87.54%	394	828	771	93.12%	57

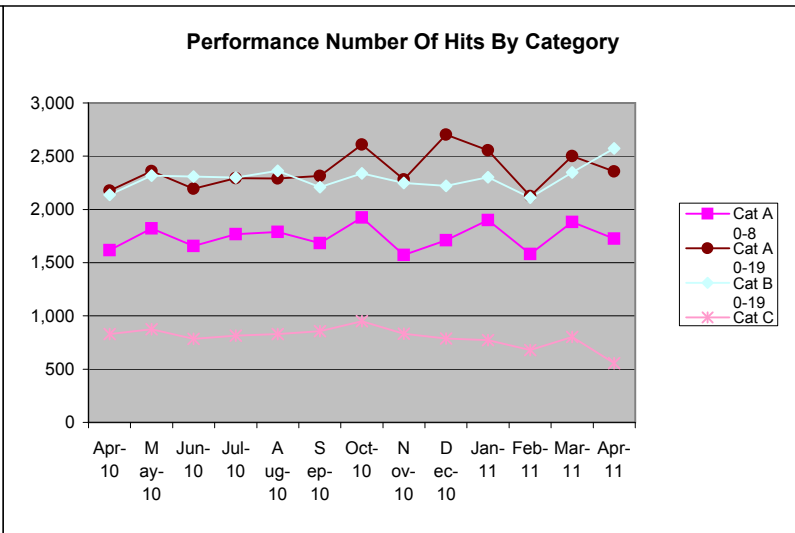
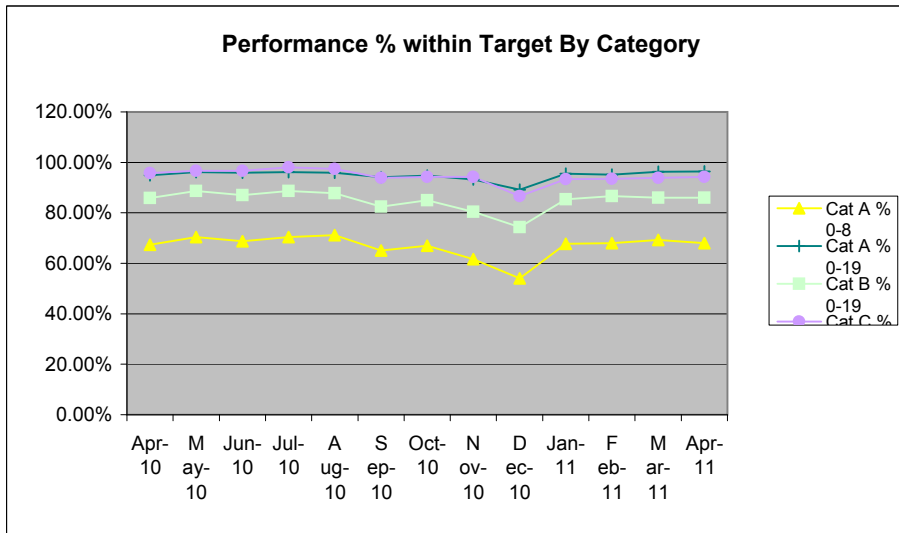


CH3

	Category A8				Category A19				Category B19				Category C60			
	TOTAL	0-8	% 0-8	8+	TOTAL	0-19	% 0-19	19+	TOTAL	0-19	% 0-19	19+	TOTAL	0-60	% 0-60	60+
Apr-10	67	45	67.16%	22	67	66	98.51%	1	87	71	81.61%	16	33	31	93.94%	2
May-10	72	42	58.33%	30	72	66	91.67%	6	80	67	83.75%	13	31	30	96.77%	1
Jun-10	68	46	67.65%	22	68	66	97.06%	2	68	59	86.76%	9	26	25	96.15%	1
Jul-10	78	54	69.23%	24	78	76	97.44%	2	67	65	97.01%	2	27	26	96.30%	1
Aug-10	56	36	64.29%	20	56	53	94.64%	3	85	75	88.24%	10	29	28	96.55%	1
Sep-10	61	33	54.10%	28	61	59	96.72%	2	76	61	80.26%	15	31	31	100.00%	0
Oct-10	73	42	57.53%	31	73	67	91.78%	6	74	66	89.19%	8	29	29	100.00%	0
Nov-10	69	35	50.72%	34	69	64	92.75%	5	83	72	86.75%	11	30	29	96.67%	1
Dec-10	97	49	50.52%	48	97	90	92.78%	7	98	78	79.59%	20	29	25	86.21%	4
Jan-11	93	61	65.59%	32	93	90	96.77%	3	96	84	87.50%	12	31	29	93.55%	2
Feb-11	66	34	51.52%	32	66	62	93.94%	4	83	81	97.59%	2	18	17	94.44%	1
Mar-11	79	51	64.56%	28	79	77	97.47%	2	73	64	87.67%	9	31	29	93.55%	2
Apr-11	65	40	61.54%	25	65	62	95.38%	3	99	86	86.87%	13	29	26	89.66%	3
TOTAL	944	568	60.17%	376	944	898	95.13%	46	1,069	929	86.90%	140	374	355	94.92%	19



North West Ambulance Service - Health Informatics									01 April 2010 to 28 February 2011				ABC Performance by District			
CH3 and SK6 and SK7 and SK23 and SK12 and SK8 and SK11 and SK9 and SY13 and WA14 and ST7 and WA13 and SY14 and WA15 and SK10 and CW98 and CW12 and CW10 and CW11 and CW1 and M22 and CW3 and CW2 and CW5 and CW4 and CW7 and CW9 and CW6 and WA16																
Perf Cat A8 by Month Gov NWS				Perf Cat A19 by Month Gov NWS				Perf Cat B19 by Month Gov NWS				Perf Cat C60 by Month Gov NWS				
Cat A TOTA	Cat A 0-8	Cat A % 0-1	Cat A 8+	Cat A TOTA	Cat A 0-19	Cat A % 0-1	Cat A 19+	Cat B TOTA	Cat B 0-19	Cat B % 0-1	Cat B 19+	Cat C TOTA	Cat C 0-60	Cat C % 0-1	Cat C 60+	
Apr-10	2,400	1,617	67.40%	783	2,293	2,177	94.90%	116	2,488	2,137	85.90%	351	865	829	95.80%	36
May-10	2,588	1,821	70.40%	767	2,453	2,360	96.20%	93	2,614	2,319	88.70%	295	906	875	96.60%	31
Jun-10	2,408	1,657	68.80%	751	2,287	2,193	95.90%	94	2,654	2,309	87.00%	345	813	785	96.60%	28
Jul-10	2,509	1,767	70.40%	742	2,385	2,294	96.20%	91	2,593	2,299	88.70%	294	830	814	98.10%	16
Aug-10	2,515	1,789	71.10%	726	2,389	2,290	95.90%	99	2,690	2,363	87.80%	327	853	831	97.40%	22
Sep-10	2,586	1,683	65.10%	903	2,460	2,314	94.10%	146	2,681	2,210	82.40%	471	912	856	93.90%	56
Oct-10	2,873	1,924	67.00%	949	2,754	2,608	94.70%	146	2,749	2,338	85.00%	411	1009	950	94.20%	59
Nov-10	2,551	1,573	61.70%	978	2,449	2,282	93.20%	167	2,797	2,248	80.40%	549	885	834	94.20%	51
Dec-10	3,161	1,710	54.10%	1451	3,029	2,702	89.20%	327	2,991	2,222	74.30%	769	908	787	86.70%	121
Jan-11	2,799	1,899	67.80%	900	2,674	2,555	95.50%	119	2,694	2,302	85.40%	392	830	774	93.30%	56
Feb-11	2,325	1,581	68.00%	744	2,233	2,126	95.20%	107	2,436	2,109	86.60%	327	726	679	93.50%	47
Mar-11	2,714	1,881	69.31%	833	2,598	2,500	96.23%	98	2,728	2,347	86.03%	381	856	804	93.93%	52
Apr-11	2,537	1,726	68.03%	811	2,444	2,356	96.40%	88	2,992	2,573	86.00%	419	589	555	94.23%	34
TOTAL	28,715	19,021	66.20%	9,694	27,406	25,901	94.50%	1,505	29,387	24,856	84.60%	4,531	9,537	9,014	94.50%	523



This page is intentionally left blank