



A summary of responses to Cheshire East Council's

Developing Dementia Day Opportunities in Macclesfield Survey

Report produced **11 May 2022** by the Research and Consultation Team, Cheshire East Council.
Email RandC@cheshireeast.gov.uk for further information.

Introduction

Purpose of the survey

During April / May 2022 Cheshire East Council undertook a survey to seek views on how Cheshire East Council should look to design day opportunities services in Macclesfield that have the potential to accommodate people with dementia in the future.

At the moment one of the centres in Macclesfield, The Brocklehurst Centre which provides a day service for adults living with dementia in Macclesfield and the surrounding areas is currently closed (since March 2020). At present it is not possible to deliver a viable day service at The Brocklehurst Centre that is able to safely facilitate social distancing, due to the size and layout of the building.

To help us plan and develop services for the future, the council sought views on how current and future users felt about current day opportunities, if the service offered meets their current and future expectations and what ideas they might have for new approaches.

Survey promotion and responses

The survey was promoted on the council's website and through partner organisations. It was held on-line with paper copies also available on request.

In total, 19 survey responses were received.

Respondent characteristics

Out of the 19 respondents who answered the survey:

- 5 stated that they currently have a family member or care for someone who attends a dementia day opportunities service or did so previously prior to March 2020 in Macclesfield.
- 7 respondents stated that they themselves / a family member do not currently attend dementia day opportunities service in Macclesfield but may do so in the future.
- 2 stated that they deliver paid care, 1 for someone who currently accesses dementia day opportunities and 1 for someone who may do so in the future.
- 5 stated other of which 4 were interested staff members and 1 stated that they were unsure if they would require care in the future.

Of the 5 who stated that they currently attend a dementia day opportunities service in Macclesfield:

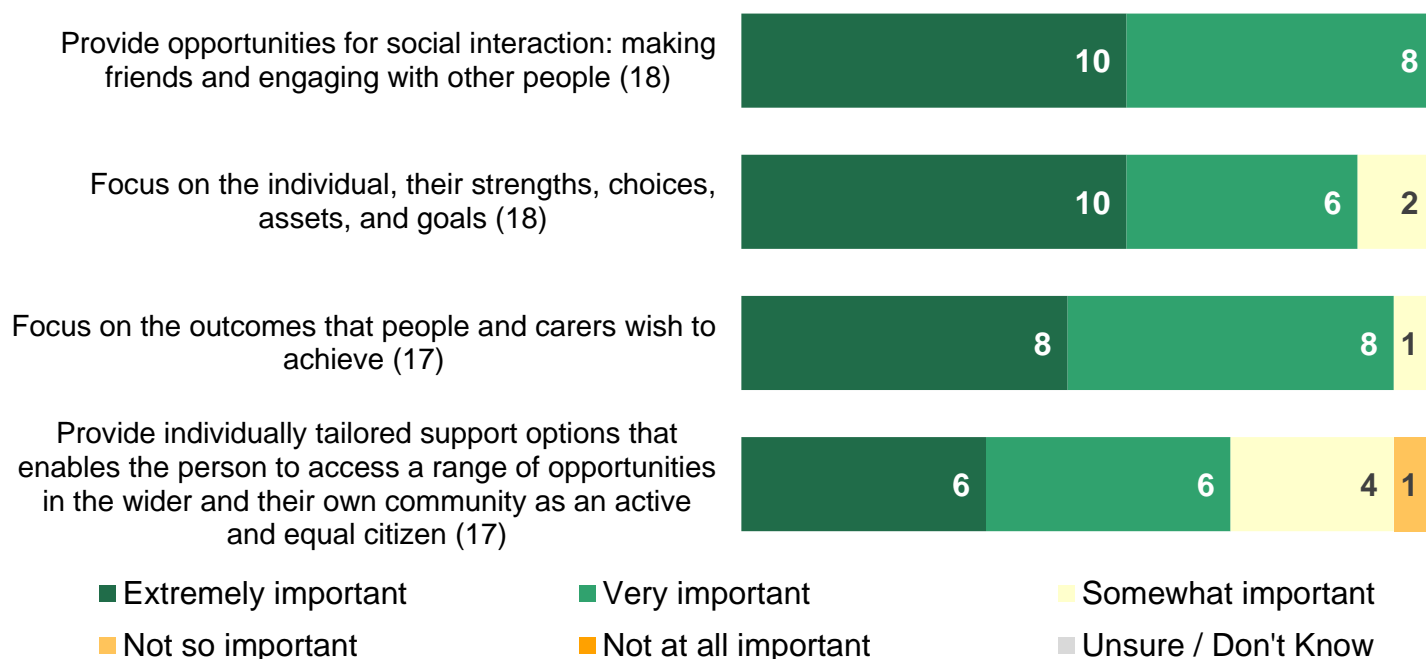
- 4 attend The Brocklehurst Centre and 1 attends Mayfield
- 5 travel by car on own, with a member of the family or a friend
- 5 stated the journey takes up to 20 minutes

The majority of respondents were female (9 out of the 16 who provided an answer), aged between 45 – 74 (10 out of 16 respondents) of White British / English / Welsh / Scottish / Northern Irish / Irish ethnicity (11 out of 16 respondents) and considered their religion as Christian (10 out of 16 respondents). 6 stated that their day-to-day activities were limited because of a health problem or disability.

Analysis of results

Respondents were given a set of statements and asked how important they considered them in relation to developing day opportunities services in Macclesfield. ‘Provide opportunities for social interaction: making friends and engaging with other people’ was considered the most important (all respondents - 18 out of the 18 who provided an answer considered this extremely or very important). Figure 1 shows the full breakdown of results.

Figure 1: In terms of developing Dementia Day Opportunities Services in Macclesfield, how important would you consider each statement? (Count)



When asked what they or the person they care for currently like and/ or dislike about dementia day opportunities / services the most mentioned aspect that respondents liked was the staff - mentioned by 5 respondents. The most disliked aspect was the lack of services available – mentioned by 5 respondents:

Aspect’s respondents like about dementia day opportunities / services (10 respondents left a comment):

“It provides enjoyment at an uncertain time of life, everyone remains valued”

- Helpful, supportive and skilled staff - 5 mentions
- Good quality service / feel safe and supported / provides enjoyment at an uncertain time of life – 4 mentions
- Good facilities / opportunity to access activities – 2 mentions
- Socialisation and company – 2 mentions

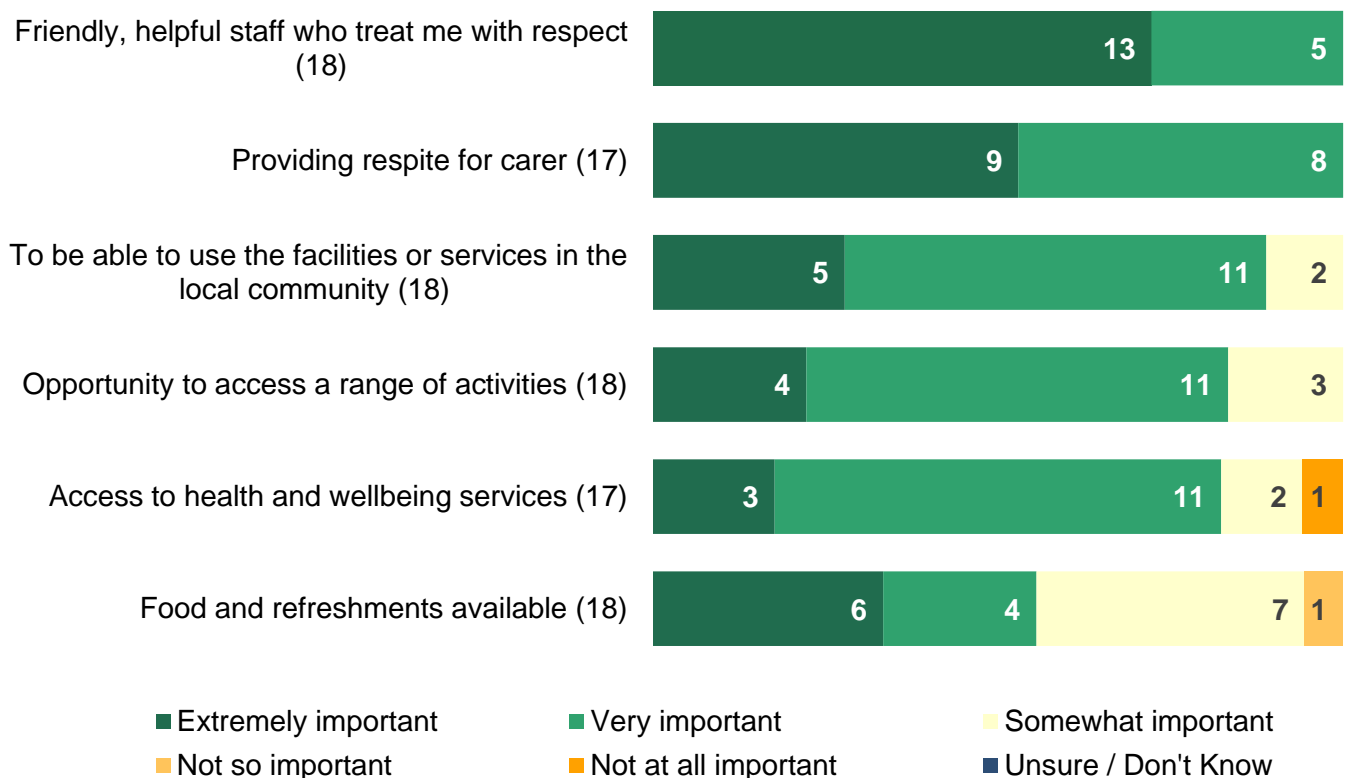
Aspect's respondents dislike about dementia day opportunities / services (11 respondents left a comment):

“Lack of services available. Building unsuitable”

- Lack of services available / council ran options are limited for day services / can't always get the days we are want / building unsuitable / no drop-in centre – 5 mentions.
- The food – 2 mentions
- Lack of information – 1 mention
- Some days friends did not attend - 1 mention
- Lack of transport - 1 mention
- Events are perceived as for those only with dementia - 1 mention

Respondents were then given a set of statements in relation to service provision and were asked how important they considered them when choosing the day opportunities that they or someone they care for may attend. ‘Friendly helpful staff who treat me with respect’ alongside ‘providing respite for carer’ were considered the most important (all respondents who provided an answer considered these extremely or very important). ‘Food and refreshments available’ were considered as less important (12 out of 18 considered this extremely or very important) (Figure 2 shows the full breakdown of results).

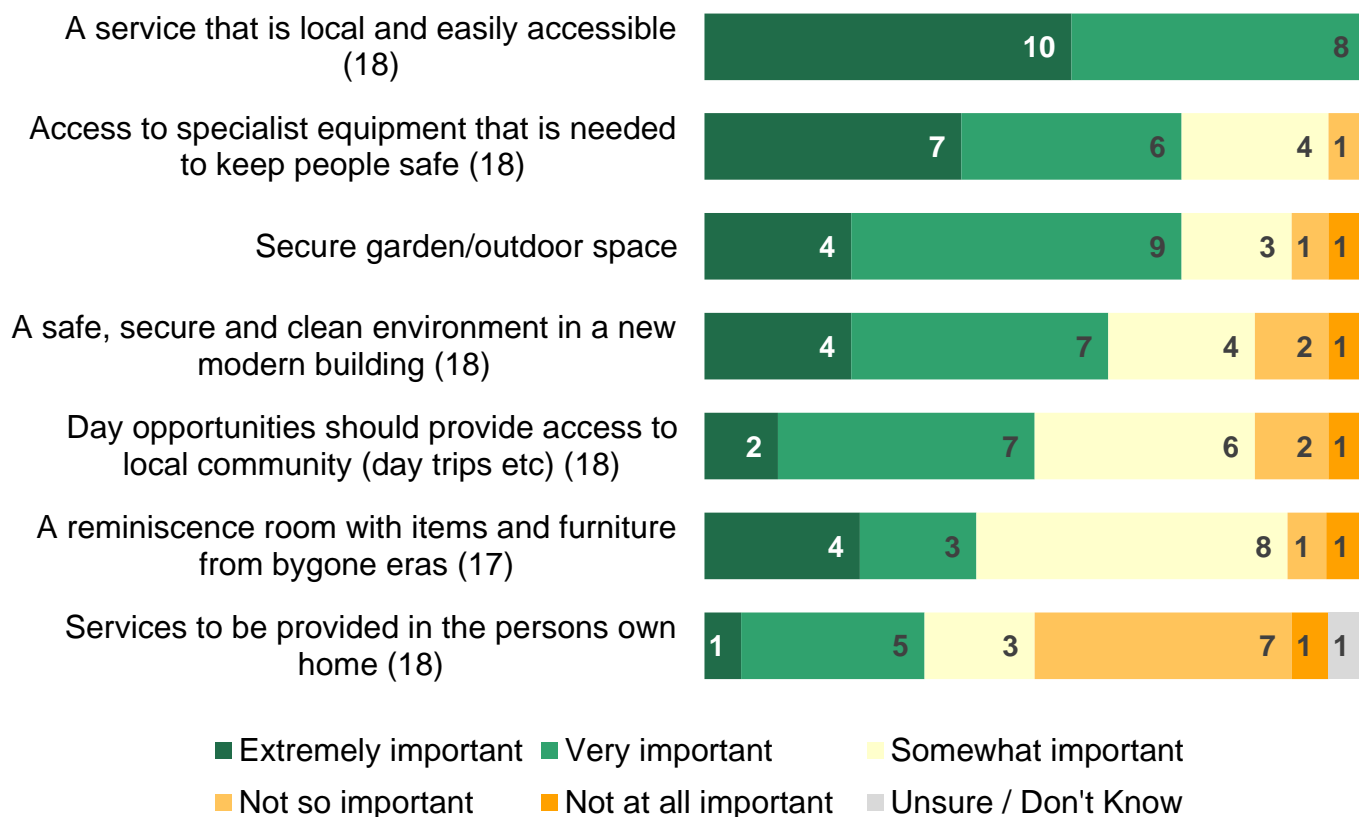
Figure 2: In terms of service provision, how important are the following when choosing the day opportunities that you or someone you care for may attend? (Count)



‘A service that is local and easily accessible’ was considered as the most important aspect in terms of environment and location when choosing the day opportunities that they or someone they care for may attend (all respondents who provided an answer considered this extremely or very important). ‘A reminiscence room with items and furniture from bygone eras’ was considered not as important

as well as 'services to be provided in the persons own home' (7 out of 17 and 6 out of 18 considered these aspects as extremely or very important respectively).

Figure 3: In terms of environment and location, how important are the following when choosing the day opportunities that you or someone you care for may attend? (Count)



When asked if respondents had anything else to add 10 respondents left a comment. The responses were as follows:

- Need services that are local / travelling to Macclesfield is not ideal for people living in Disley (4 mentions)
- Make sure there is a variety of support & activities / flexibility of hours / dementia only groups / time to be spoken to individually (4 mentions)
- Look at transport options / travel costs in order to attend (2 mentions)
- Day care is very valued - need more of it for people with dementia in Macclesfield / miss the service provided at Brocklehurst Day Centre (2 mentions)
- Environment and staff are the most important things (1 mention).

Recommendations

Whilst this report provides a good overview on what is important to people when considering dementia day care options, the response received overall to the survey was low. The research and consultation team recommend that continued regular engagement is undertaken with current users of dementia day services in Macclesfield as part of service monitoring reviews on how day services are delivered. This will ensure that users can continue to shape services and contribute to their ongoing development.