



Ralph Kemp Corporate Manager Commissioning –
Waste and Environmental Services

OFFICIAL

Summary of Strategy

- The research for this strategy suggests that coffin burial accounts for approximately 16 to 20 per cent of funerals in Cheshire East, with Cheshire East Council's cemeteries accommodating 8.4 per cent of all coffin burials in Cheshire East.
- Ashes following cremation accounted for approximately 59 per cent of total burials in the council's cemeteries in 2017. Currently, Town & Parish Councils and Parish Churchyards account for approximately 8% of all burials in Cheshire East.

- Even accounting for projected increases in the number of deaths, there is sufficient capacity within the council's cemeteries overall to meet demand for new graves for over 30 years.
- The drive-time catchment analysis suggests that Cheshire East Council might wish to consider Crewe Meadow Brook and Macclesfield as its two principal cemeteries and continue to operate and maintain their other cemeteries.
- The Strategy suggests where appropriate, the transfer of existing facilities or working to set up a trust for future cemetery provision where there is a desire to provide more local provision over and above CE's principal cemeteries.

CE Managed Cemetery's

Cemetery	Cemetery	Opened	Acres
Alderley Edge	Chelford Road, Alderley Edge SK9 7TQ	1906	4.00
Congleton	Howey Lane, Congleton CW12 4AE	2004	3.18
Crewe Coppenhall	Reid Street, Coppenhall CW1 3DZ	1863	9.44
Crewe Badger Av	Badger Avenue, Crewe CW1 3JG	1872	28.65
Crewe Meadow Brook	Minshull New Road, Crewe CW1 3PP	2017	13.20
Knutsford	Tabley Hill Lane, Tabley WA16 0EW	1902	5.00
Macclesfield	Prestbury Road, Macclesfield SK10 3BU	1866	68.00
Nantwich	Whitehouse Lane, Nantwich CW5 6HP	1875	6.30
Sandbach	The Hill, Sandbach CW11 1JJ	1935	5.62
Weston	Cemetery Road, Weston, Crewe CW2 5LQ	1902	1.80
Wilmslow	Manchester Road, Wilmslow SK9 2LE	1907	4.50

Burials by type

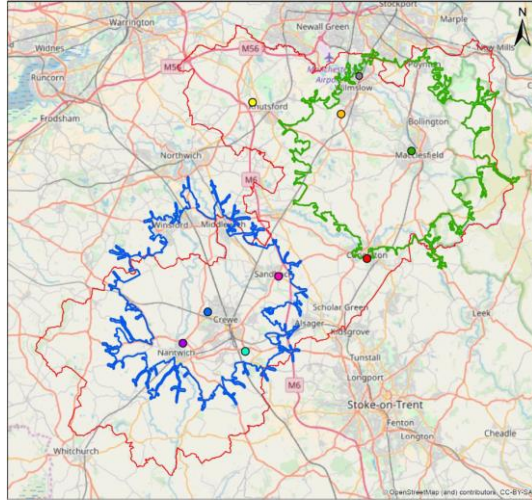
Cemetery	2016		2017	
	Coffins	Ashes	Coffins	Ashes
Alderley Edge	23	24	17	31
Congleton	17	25	11	28
Crewe Coppenhall	2	4	1	4
Crewe Badger Av	61	143	54	146
Crewe Meadow Br	23	19	47	31
Knutsford	27	10	28	14
Macclesfield	63	98	76	138
Nantwich	44	46	34	53
Sandbach	31	27	46	23
Weston	4	5	7	11
Wilmslow	36	19	29	30

Capacity Remaining

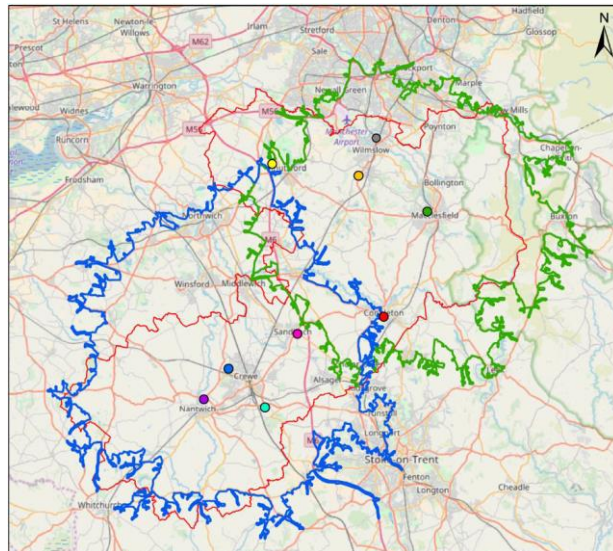
Cemetery	Available graves	Demand in 2017	Capacity in years
Alderley Edge	1,322	11	120
Congleton	792	14	59
Crewe Coppenhall	0	0	
Crewe Badger Avenue	0	0	
Crewe Meadow Brook	6,705	62	108
Knutsford	426	15	29
Macclesfield	2,718	33	84
Nantwich	918	28	33
Sandbach	235	26	9
Weston	474	4	135
Wilmslow	283	16	18
Totals	13,873	206	67

30-minute drive-time catchments for Crewe Meadow Brook and Macclesfield

The computer software accounts for varying travel speeds depending upon the roads within the search area and for this report has also accounted for the generally lower speeds achieved by funeral vehicles. The use of drive-time catchment mapping, using travel speeds of 60% of normal traffic, has been accepted at numerous Planning Appeals as being a valid approach to defining crematoria catchments.



45-minute drive-time catchments for Crewe Meadow Brook and Macclesfield:



Public Consultation Questions


Have you read...

...the full draft Cemeteries Strategy?

...the brief summary of the draft
Cemeteries Strategy?



OFFICIAL



How strongly do you agree or disagree that the Cemetery Regulations are...

...Clear?

...Comprehensive?

...Suitable?



OFFICIAL

How strongly do you agree or disagree that the draft Cemeteries Strategy is...

...Clear?

...Comprehensive?

...Suitable?

OFFICIAL

How do you rate the following aspects of the draft Cemeteries Strategy?

Cemeteries strategy for the short term

Cemeteries strategy for the medium term

Cemeteries strategy for the long term

The Cemeteries Strategy overall

OFFICIAL