

# Cheshire East Scrutiny Committee

13<sup>th</sup> March 2025

Cheshire Fire & Rescue Service (CFRS) Community  
Risk Management Plan 2024-28 Update Including  
Response to Flood Related Incidents

GM Matt Barlow



**Cheshire**  
Fire & Rescue Service

# CFRS response to widescale Flooding Events



A dedicated External Planning Manager



Works closely with CRF Partners



Attend incidents based on requests through Fire Control



Proactive with forecasts of extreme weather/heavy rainfall



Cheshire Local Resilience Forum Flood Advisory Service Teleconference



Information is shared internally to ensure all staff are aware



CFRS publish weather warning/alerts on our Social Media



Previously reported to CE Scrutiny Committee

## Review of specialist water Safety/Rescue Provision

- All front line firefighters issued with Wading suits circa 550 staff
- Redeployment of Specialist Water Rescue Teams
- Relocation of Rescue Boats influenced by Risk and Demand



IRMP 2020-24

*'Extreme weather events linked to climate change can pose a risk to people and properties.'*

*'We will review our flood/water response provision across Cheshire to ensure that it meets emerging needs.'*

## CFRS Flood/Water Response

Review, Options & Recommendations

February 2021



# CFRS CRMP 2024-2028

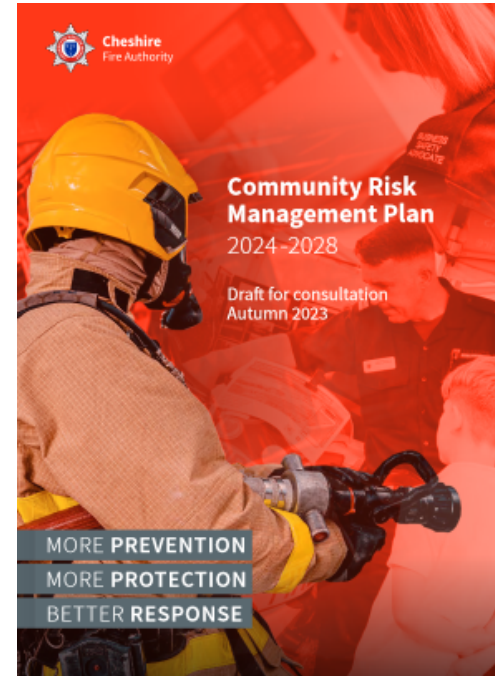
## Summary of Proposals





# Community Risk Management Plan

- Required under Fire and Rescue National Framework
- Identify and address key fire and rescue risks
- Cheshire's corporate plan and key objectives:
  - **More** Prevention
  - **More** Protection
  - **Better** Response
  - People
  - Finances



# Project progress



**Project 1:** change the way we measure response times.



**Project 2:** convert four on-call fire engines to full-time crewing during weekdays.



**Project 3:** convert Knutsford's fire engine from on-call to day crewing.



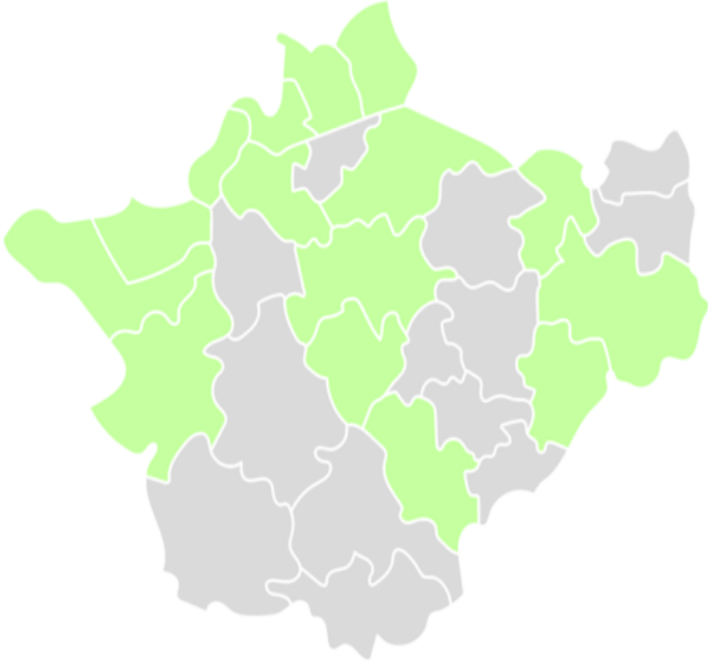
**Project 4:** reorganise daytime fire cover in Warrington.



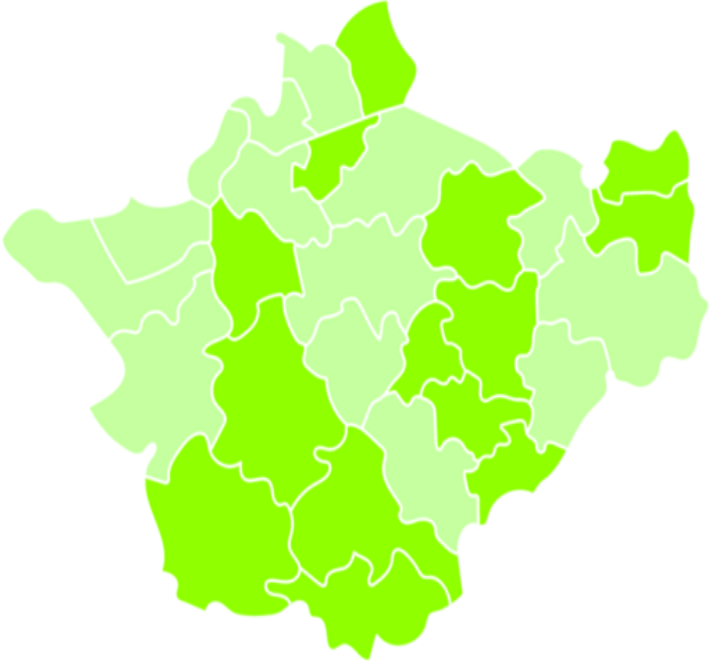
**Project 5:** strengthen the on-call system.



# Impact of response projects

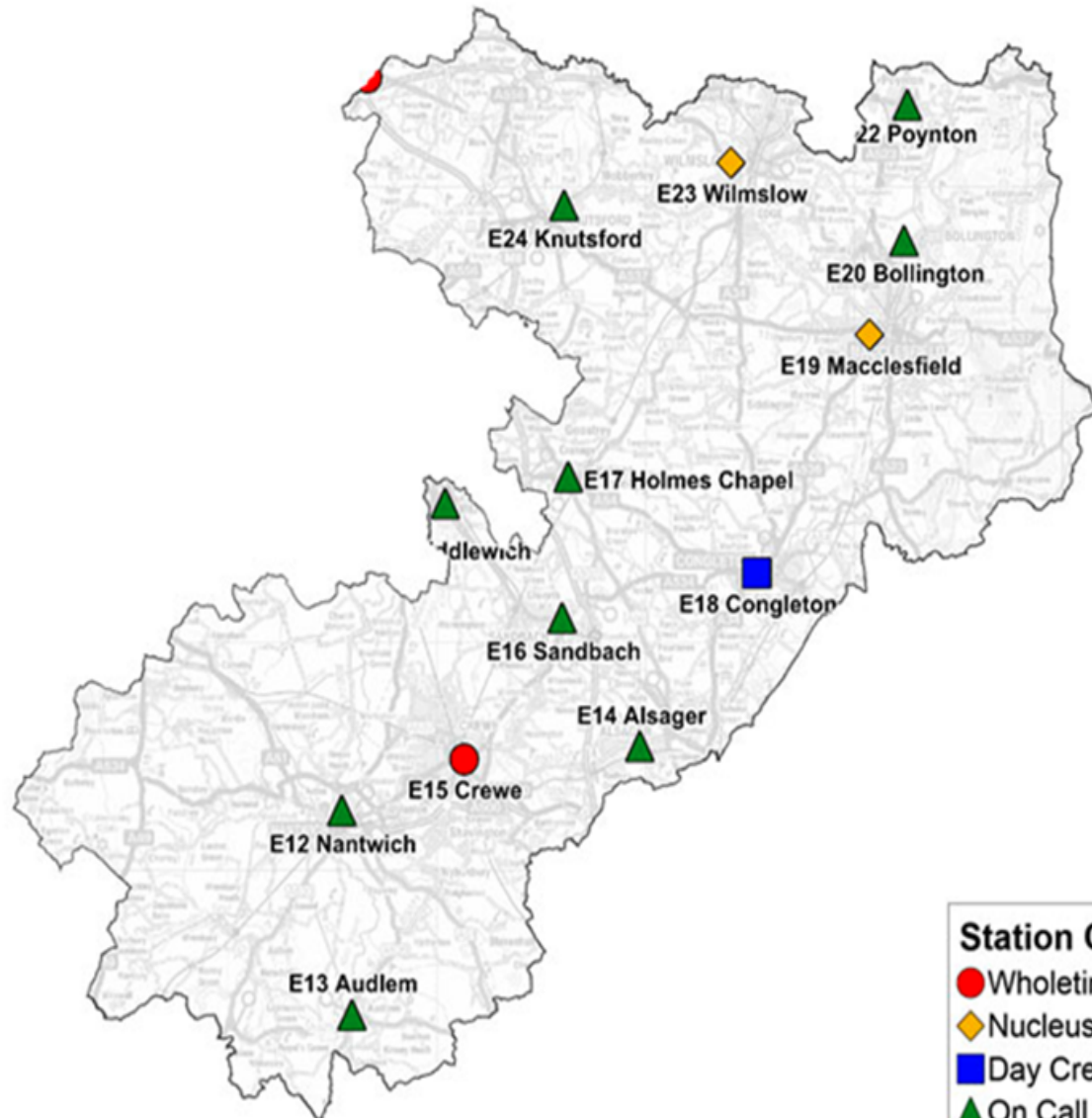


Before



After





**Station Crewing Type**

- Wholetime
- ◆ Nucleus
- Day Crewed
- ▲ On Call

## Cheshire

Business Intelligence Team © Crown copyright and database rights 2016 Ordnance Survey 1000240064

OFFICIAL



# Multiagency Response to Widescale Flooding Events



OFFICIAL



Please feel free to ask questions.

