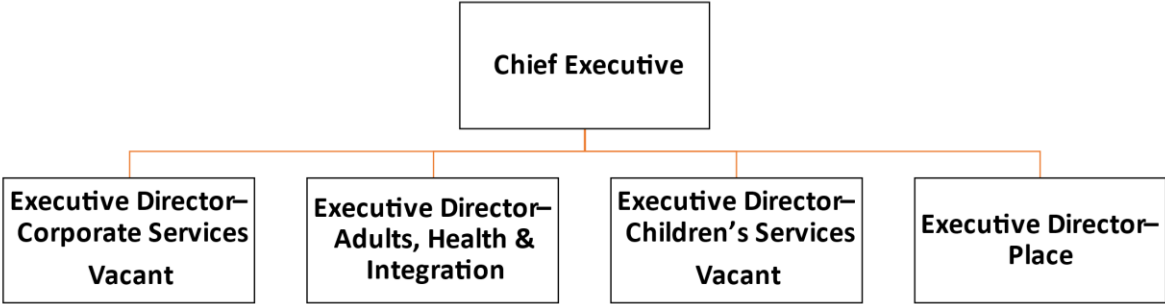


OPEN

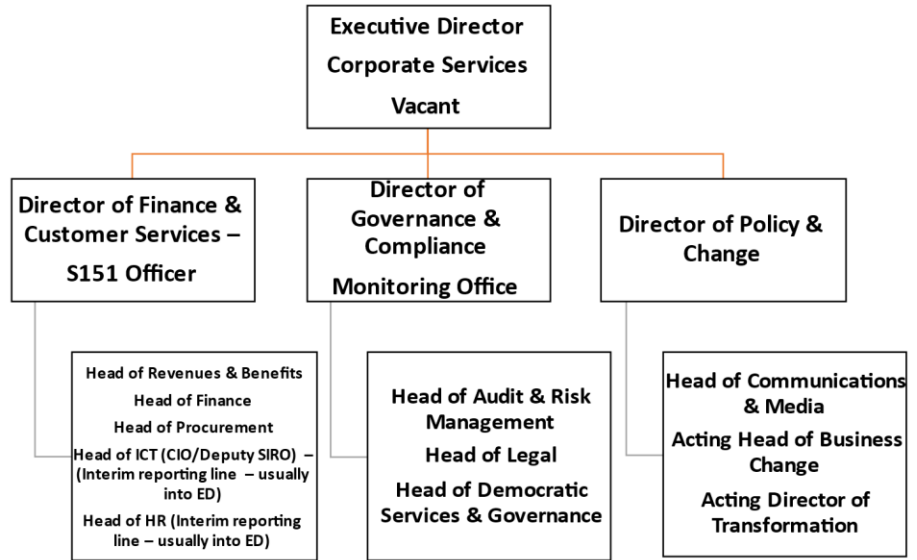
Current Senior Structure for Cheshire East Council

Current Senior Leadership Structure



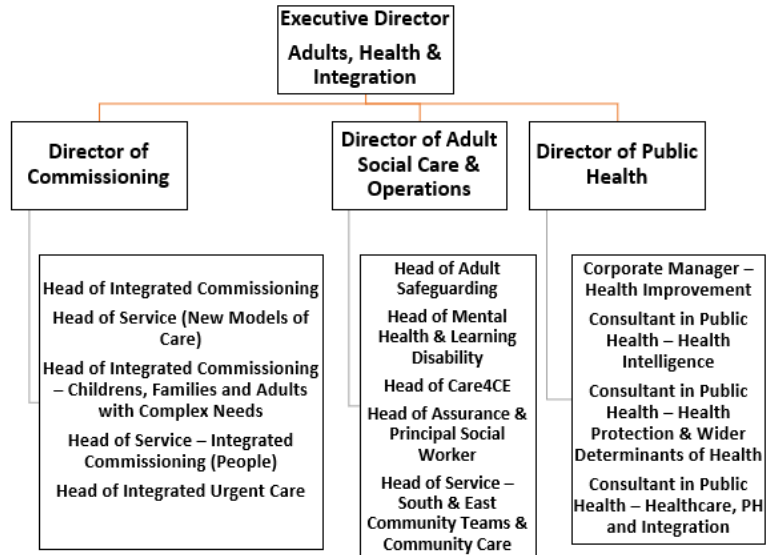
OFFICIAL

Current Structure Corporate



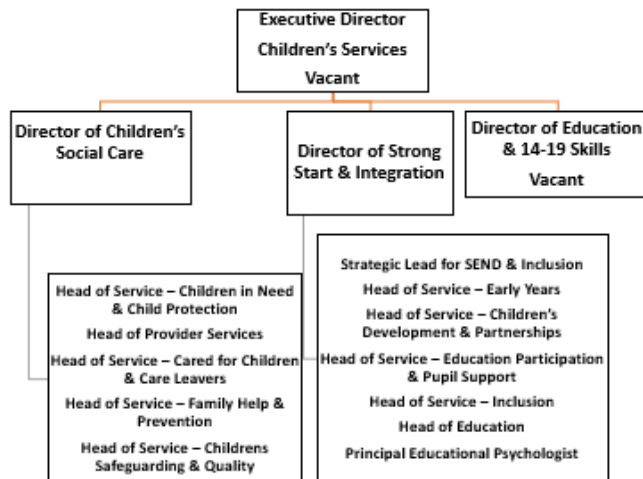
OFFICIAL

Current Structure - Adults



OFFICIAL

Current (temp) Structure-Childrens

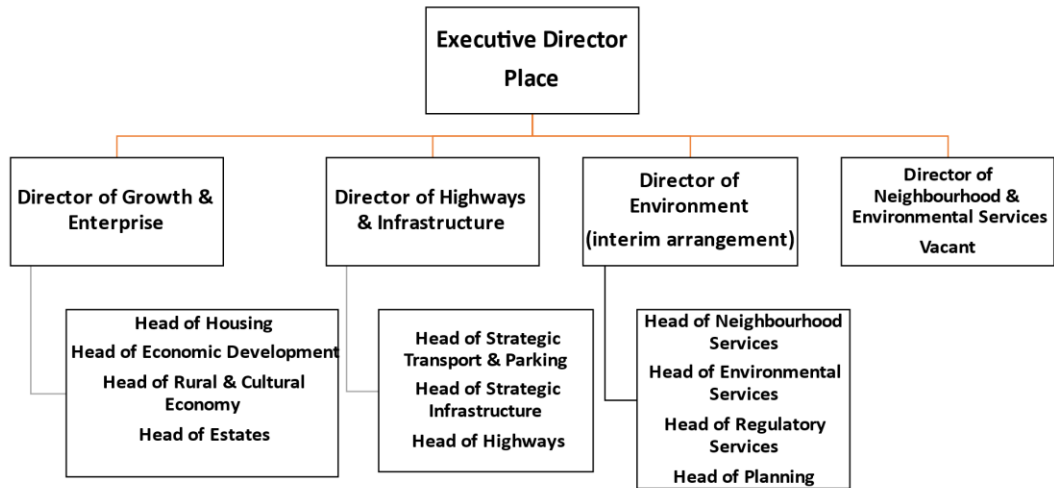


OFFICIAL

Note: A temporary structure with two directors has been in place since June 2023, since the post of Director of Education and 14-19 Skills became vacant, with a temporary redistribution of the service functions.

OFFICIAL

Current Structure Place



OFFICIAL

