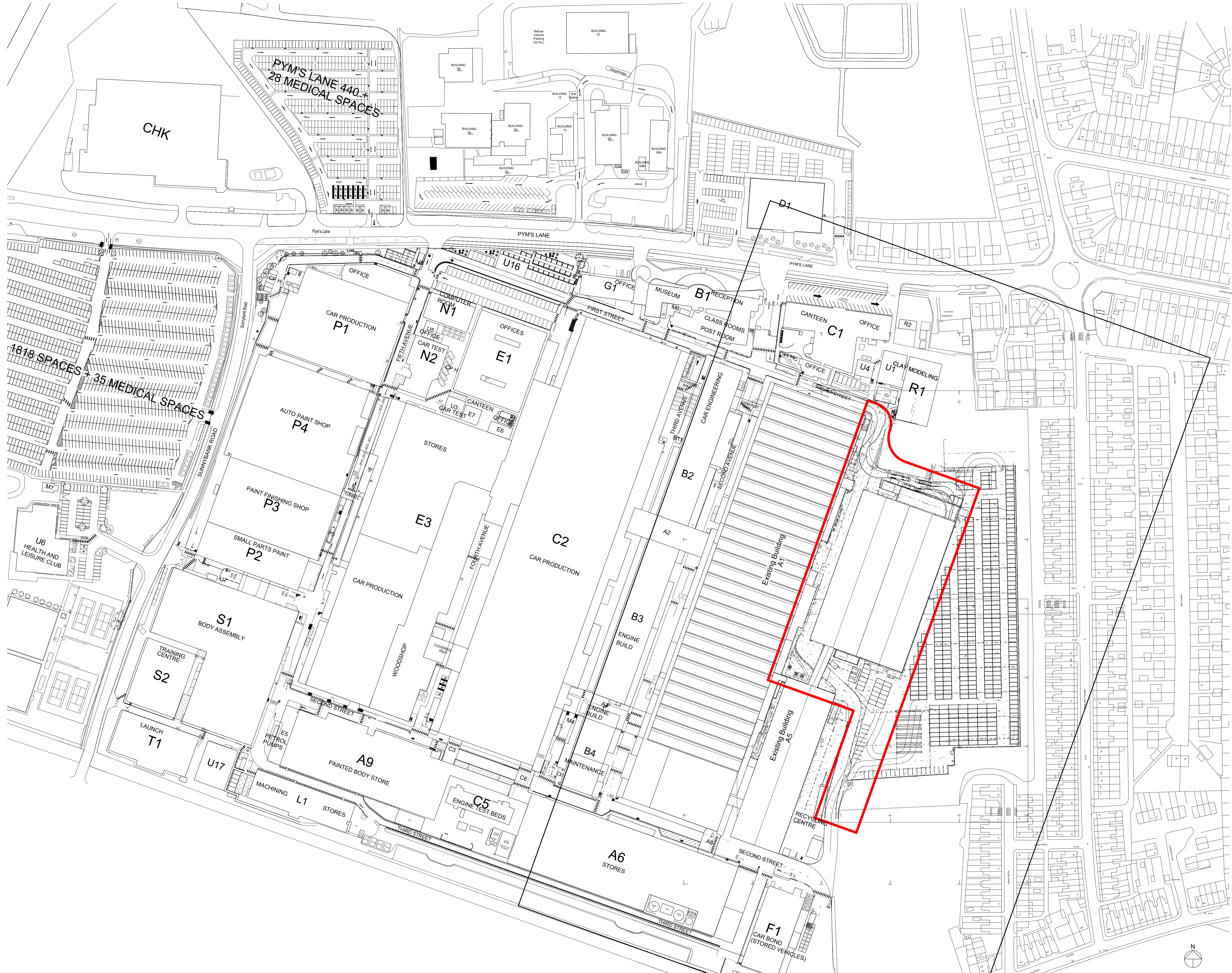


23/2349N

BENTLEY MOTORS LIMITED

PYMS LANE CREWE

CW1 3PL



General Notes:

This drawing is the property of Fletcher-Rae (UK) Limited and copyright is reserved by them. The drawing is not to be copied, reproduced or re-distributed either in whole or in part without the prior written consent of Fletcher-Rae (UK) Limited.

The originator shall have no responsibility for any liability, loss, cost, damage or expense arising from or relating to any use of this document other than for its intended purpose on this project.

This drawing shall be read in conjunction with all other relevant drawings, specifications and associated documentation. Any discrepancies, errors or omissions are to be reported to the originator before proceeding with work.

All dimensions are to be checked on site by the contractor prior to proceeding with any work. This drawing shall not be scaled to ascertain any dimensions. Work to figured dimensions only.

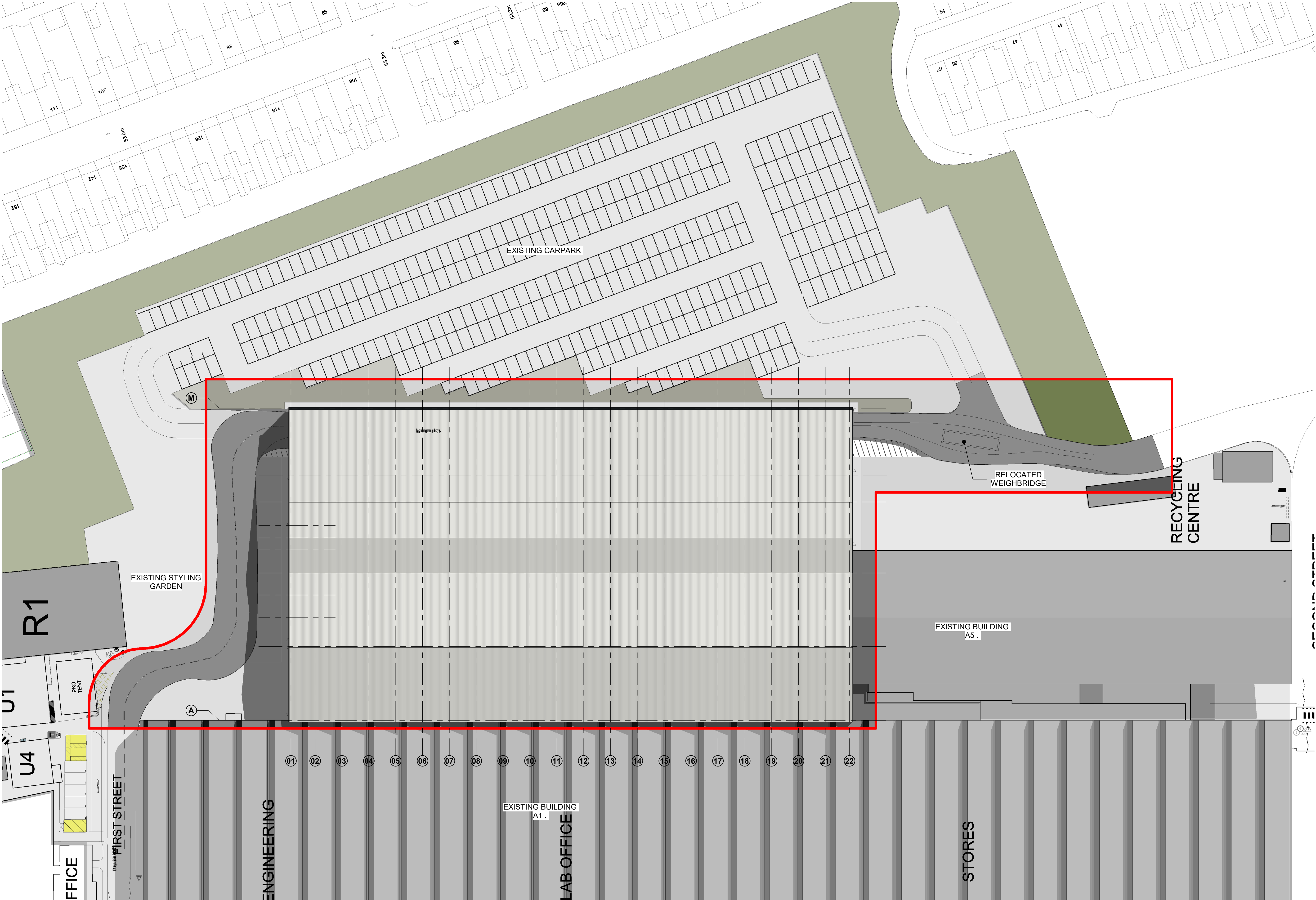
DISCLAIMER
When this drawing is issued in CAD, it is an uncontrolled version issued for information only, to enable the recipient to prepare their own documents/ drawings for which they are solely responsible.

SOFTWARE INTEROPERABILITY
Fletcher-Rae (UK) Limited prepared this drawing using Autodesk®REVIT.

Fletcher-Rae (UK) Limited does not accept liability for any loss or degradation of any information held in the drawing resulting from the translation from the original file format to any other file format or from the recipients reading of it in any other programme.

Hazard Identification		
Ref	Hazard	Date

Rev		Revision Details		Drawn	Date	Chkd
Project No.		23001				
Suitability		S3 SUITABLE FOR REVIEW AND COMMENT				
Status		Planning				
Client:						
Bentley Motors Ltd						
Project:						
Integrated Logistics Centre Crewe						
Sheet Name:						
Location Plan						
Drawing No.						
23001-FRA-V1-XX-DR-A-PL01						
Rev.						
Drawn By		JDC	Scale		1 : 1250 @ A1	
Created		14.04.2023				



General Notes:

This drawing is the property of Fletcher-Rae (UK) Limited and copyright is reserved by them. The drawing is not to be copied, reproduced or re-distributed either in whole or in part without the prior written consent of Fletcher-Rae (UK) Limited.

The originator shall have no responsibility for any liability, loss, cost, damage or expense arising from or relating to any use of this document other than for its intended purpose on this project.

This drawing shall be read in conjunction with all other relevant drawings, specifications and associated documentation. Any discrepancies, errors or omissions are to be reported to the originator before proceeding with work.

All dimensions are to be checked on site by the contractor prior to proceeding with any work. This drawing shall not be scaled to ascertain any dimensions. Work to figured dimensions only.

DISCLAIMER
When this drawing is issued in CAD, it is an uncontrolled version issued for information only, to enable the recipient to prepare their own documents/ drawings for which they are solely responsible.

SOFTWARE INTEROPERABILITY
Fletcher-Rae (UK) Limited prepared this drawing using Autodesk REVIT.

Fletcher-Rae (UK) Limited does not accept liability for any loss or degradation of any information held in the drawing resulting from the translation from the original file format to any other file format or from the recipients reading of it in any other programme.

Hazard Identification		
Ref	Hazard	Date

Rev	Revision Details	Drawn	Date	Chk'd
Project No.	23001			
Suitability	S3 SUITABLE FOR REVIEW AND COMMENT			
Status	Planning			

Client:
Bentley Motors Ltd

Project:
**Integrated Logistics Centre
Crewe**

Sheet Name:	
Proposed Site Plan	
Drawing No.	23001-FRA-V1-XX-DR-A-PL05
Drawn By	JDC
Created	14.04.2023
Scale	1 : 500 @ A1

General Notes:

This drawing is the property of Fletcher-Rae (UK) Limited and copyright is reserved by them. This drawing is not to be copied, reproduced or re-distributed without written consent of Fletcher-Rae (UK) Limited.

The originator shall have no responsibility for any liability, loss, cost, damage or expense arising from or resulting in any use of this document after that for its intended purpose on this project.

This drawing shall be read in conjunction with all other relevant drawings, specifications and associated documentation. Any discrepancies, errors or omissions are to be reported to the originator before proceeding with work.

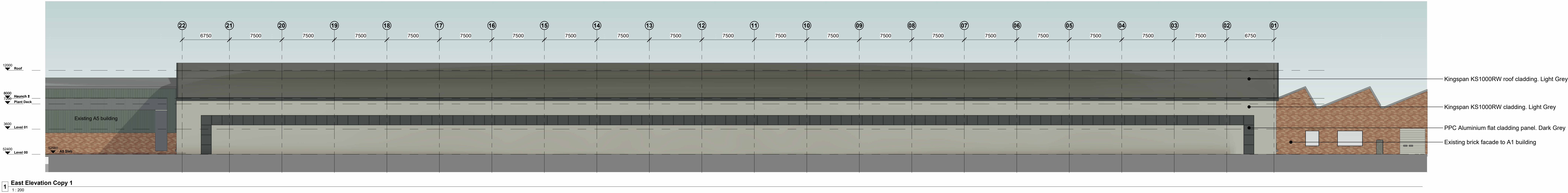
All dimensions are to be checked on site by the contractor prior to proceeding with any work. This drawing shall not be used to ascertain any dimensions. Work to figure dimensions only.

DISCLAIMER:
When this drawing is issued in CAD, it is an uncontrolled version issued for information only. It should be replaced by the original paper document or printed on which they are clearly responsible.

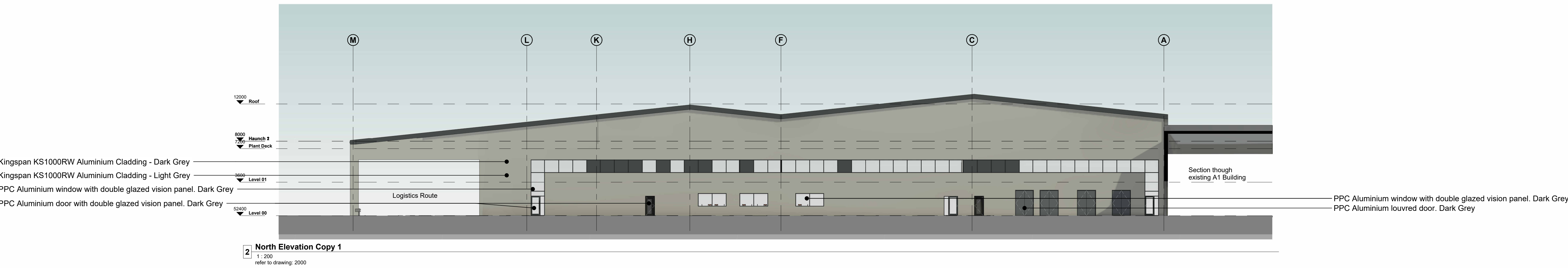
SOFTWARE INTEROPERABILITY:
Fletcher-Rae (UK) Limited prepared this drawing using AutoCAD/REVIT.

Fletcher-Rae (UK) Limited does not accept liability for any loss or degradation of any information held in the drawing resulting from the translation from the original file format to any other file format or from the recipient's handling of it in any other programme.

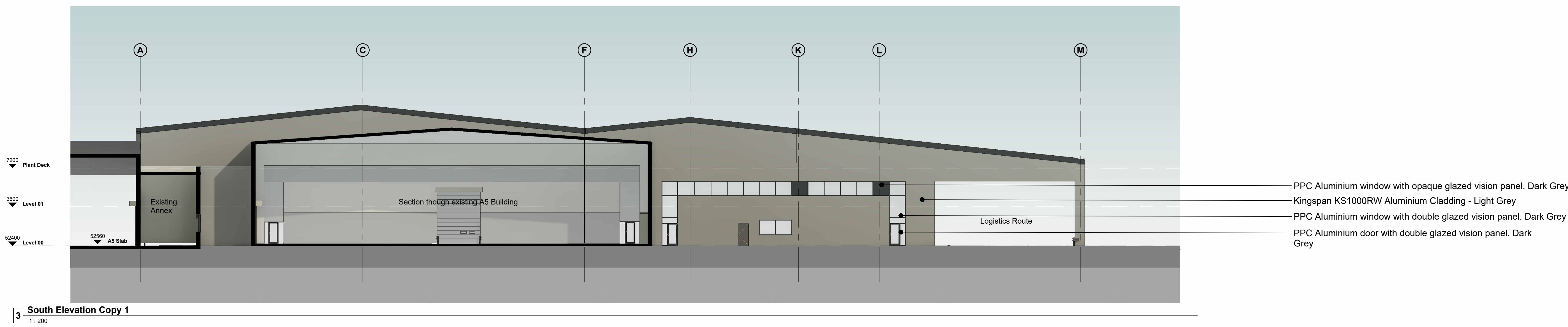
Hazard Identification		
Ref	Hazard	Date



1 East Elevation Copy 1
1:200



2 North Elevation Copy 1
1:200
refer to drawing: 2000



3 South Elevation Copy 1
1:200

Rev. Revision Details Drawn Date Checkd

Project No. **23001**
Suitability **S3 SUITABLE FOR REVIEW AND COMMENT**
Status **Planning**

Client **Bentley Motors Ltd**

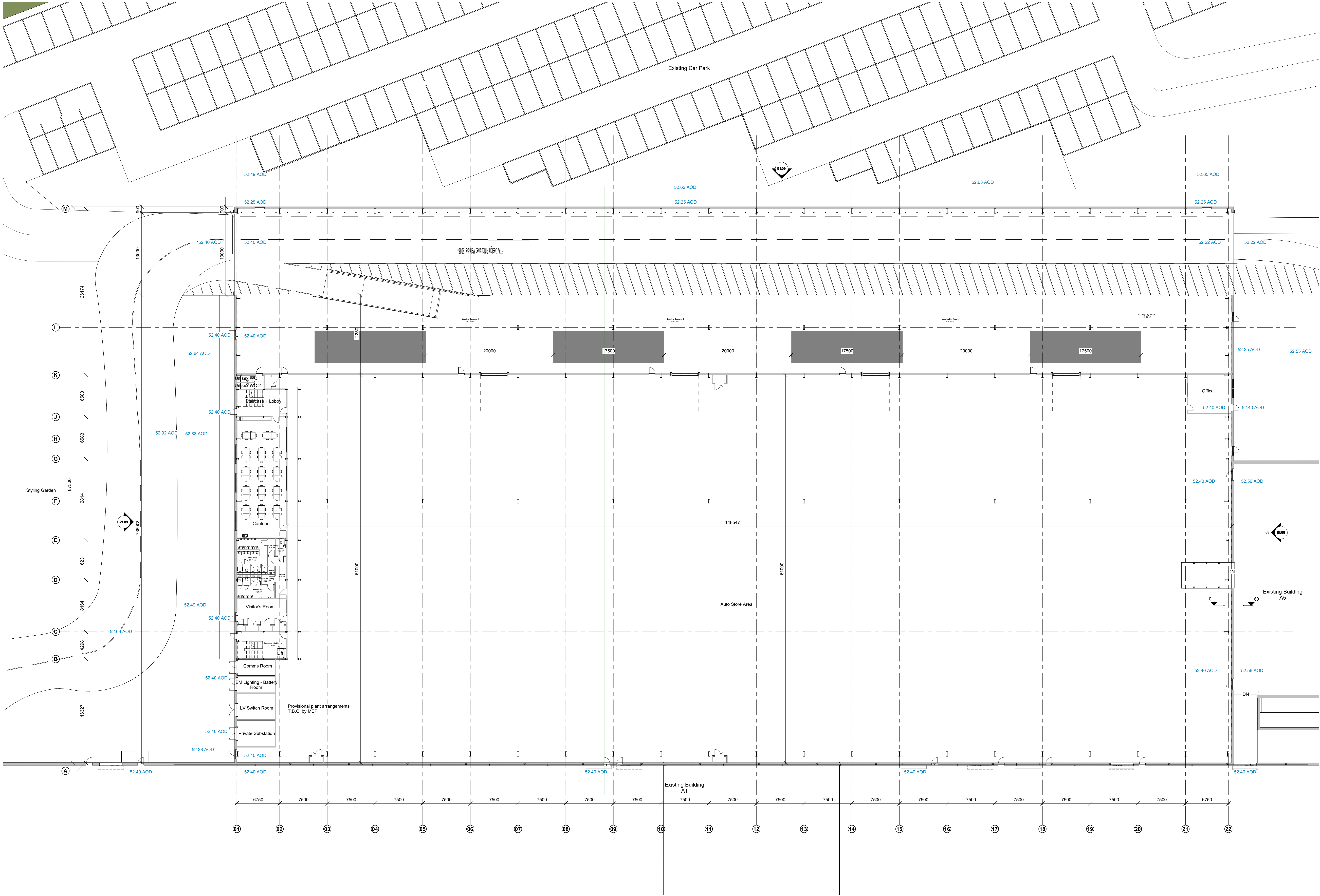
Project **Integrated Logistics Centre Crewe**

Sheet Name: **Proposed GA Elevations**

Drawing No. **23001-FRA-V1-XX-DR-A-PL09** Rev.
Drawn By **JDC** Check **1:200 @ A0**
Created **18.04.2023**

fletcher | rae

Level 12, Tower 12, 18-22 Bridge Street, Manchester, M3 3EQ
T +44 (0) 161 242 1140
W www.fletcher-rae.com
E info@fletcher-rae.com



General Notes:

This drawing is the property of Fletcher Rae (UK) Limited and copyright is reserved by them. This drawing is not to be copied, reproduced or distributed without the prior written consent of Fletcher Rae (UK) Limited.

The originator shall have no responsibility for any liability, loss, cost, damage or expense arising from or resulting in any use of this document other than for its intended purpose or this project.

This drawing shall be used in conjunction with all other relevant drawings, specifications and associated documentation. Any discrepancies, errors or omissions are to be reported to the originator promptly with work.

All dimensions are to be checked on site by the contractor prior to proceeding with any work. This drawing shall not be used to describe any dimensions work in figure dimensions only.

DISCLAIMER

When this drawing is issued in CAD, it is an uncontrolled version issued for information only. It is not to be used for construction purposes.

SOFTWARE INTEROPERABILITY

Fletcher Rae (UK) Limited does not accept liability for any loss or degradation of any information held in the drawing resulting from the translation from the original file format to any other file format or from the subsequent reading of it in any other programme.

Hazard Identification

Ref	Hazard	Date
-----	--------	------

Rev. Revision Details Drawn Date Checked

Project No: **23001**
Subsidiary: **S3 SUITABLE FOR REVIEW AND COMMENT**
Status: **Planning**

Bentley Motors Ltd

Project:
**Integrated Logistics Centre
Crewe**

Sheet Name:
Proposed Ground Floor GA Plan

Drawing No: **23001-FRA-V1-00-DR-A-PL06** Rev:
Drawn by: **JDC** Date: **14.04.2023**
Created: **14.04.2023** Scale: **1:200 @ A0**

fletcher | rae

Level 12, Tower 12, 18-22 Bridge Street, Manchester, M3 3BZ

t +44 (0) 161 242 1140
w www.fletcher-rae.com
e info@fletcher-rae.com

General Notes:

This drawing is the property of Fletcher-Rae (UK) Limited and copyright is reserved by them. The drawing is not to be copied, reproduced or re-distributed either in whole or in part without the prior written consent of Fletcher-Rae (UK) Limited.

The originator shall have no responsibility for any liability, loss, cost, damage or expense arising from or relating to any use of this document other than for its intended purpose on this project.

This drawing shall be read in conjunction with all other relevant drawings, specifications and associated documentation. Any discrepancies, errors or omissions are to be reported to the originator before proceeding with work.

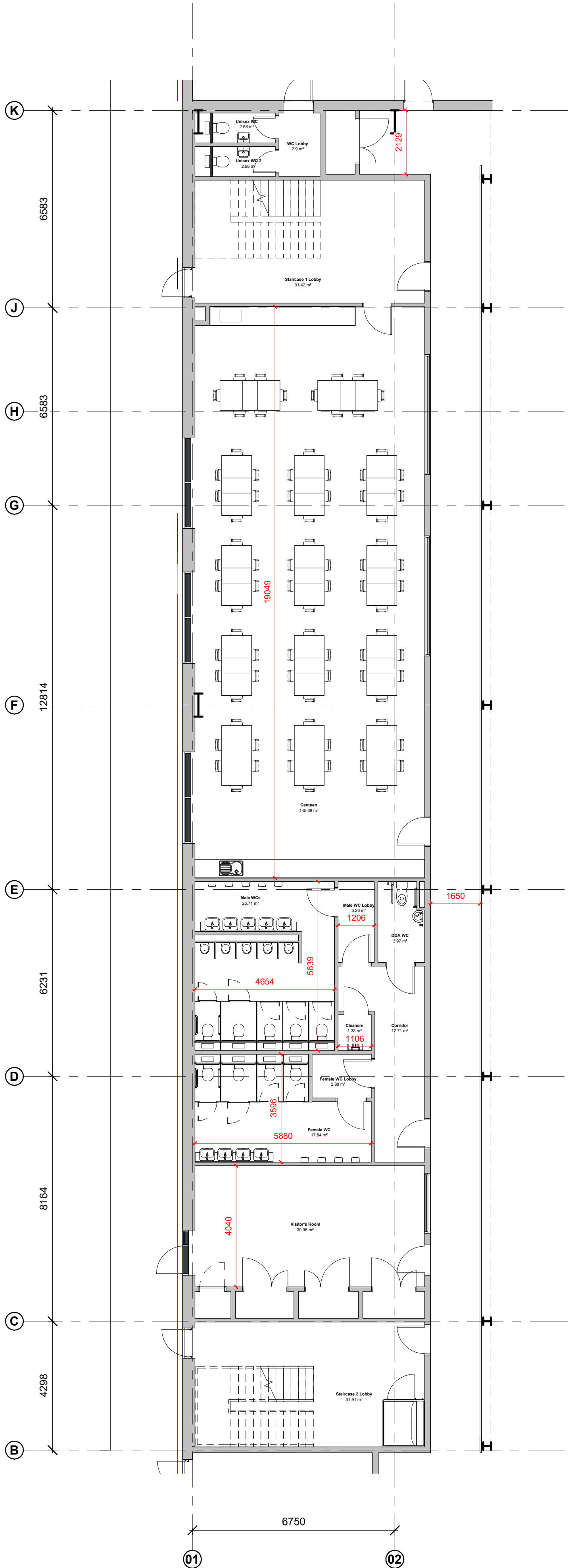
All dimensions are to be checked on site by the contractor prior to proceeding with any work. This drawing shall not be scaled to ascertain any dimensions. Work to figured dimensions only.

DISCLAIMER
When this drawing is issued in CAD, it is an uncontrolled version issued for information only. To enable the recipient to prepare their own documents/ drawings for which they are solely responsible.

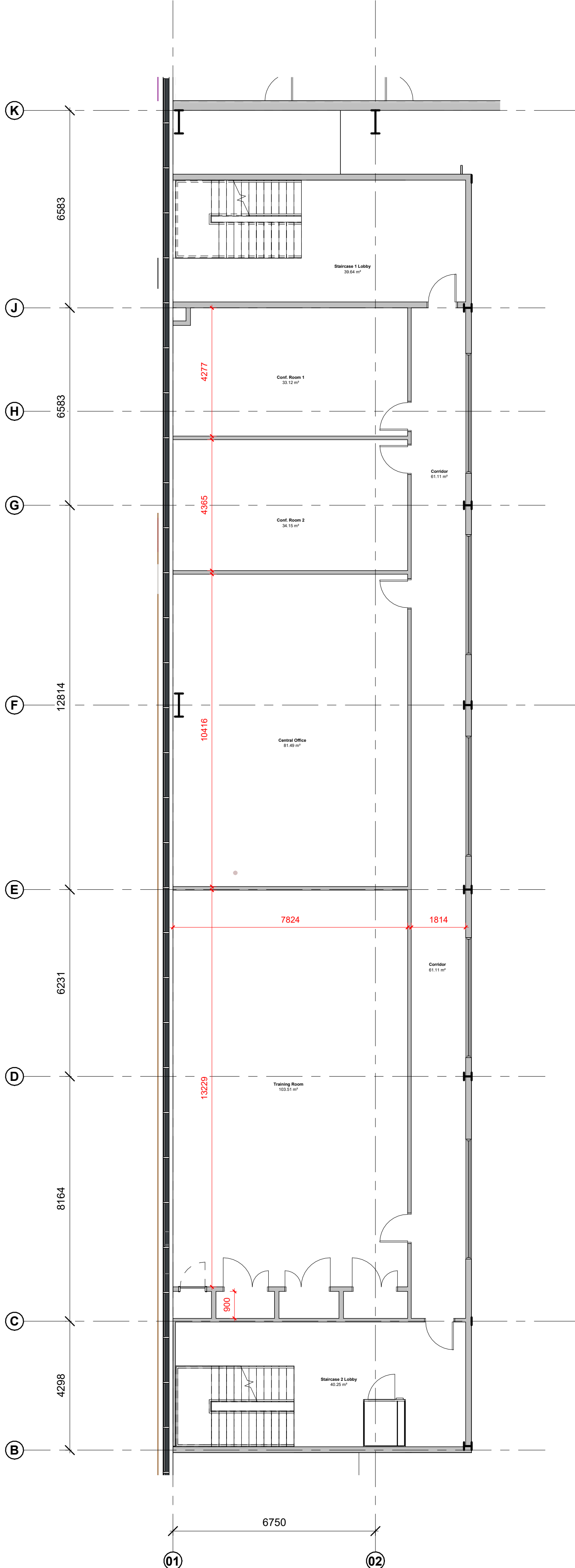
SOFTWARE INTEROPERABILITY
Fletcher-Rae (UK) Limited prepared this drawing using Autodesk®REVIT.

Fletcher-Rae (UK) Limited does not accept liability for any loss or degradation of any information held in the drawing resulting from the translation from the original file format to any other file format or from the recipients reading of it in any other programme.

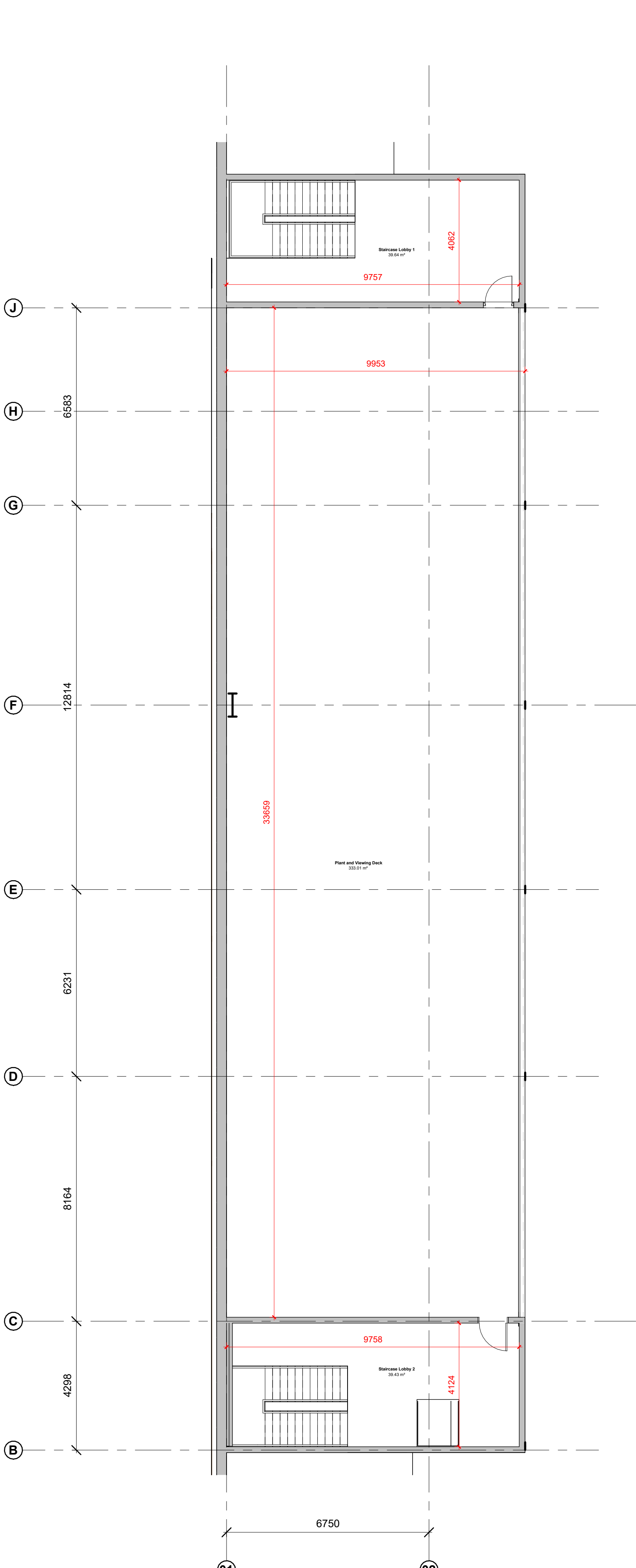
Hazard Identification		
Ref	Hazard	Date



1 20-00_Office GA Plan Level 00 Copy 1
1 : 100



2 20-00_Office GA Plan Level 01 Copy 1
1 : 100



3 20-00_Office GA Plan Plant Deck Level Copy 1
1 : 100

Rev	Revision Details	Drawn	Date	Chk'd

Project No. **23001**
Suitability **S3 SUITABLE FOR REVIEW AND COMMENT**
Status **Planning**

Client:
Bentley Motors Ltd

Project:
**Integrated Logistics Centre
Crewe**

Sheet Name:		Rev.
Proposed Office GA Plans		
Drawing No.	23001-FRA-V1-XX-DR-A-PL12	
Drawn By	JDC	Scale 1 : 100 @ A1
Created	18.04.2023	

fletcher | rae

Level 12, Tower 12, 18-22 Bridge Street, Manchester, M3 3BZ

t +44 (0) 161 242 1140
w www.fletcher-rae.com
e info@fletcher-rae.com