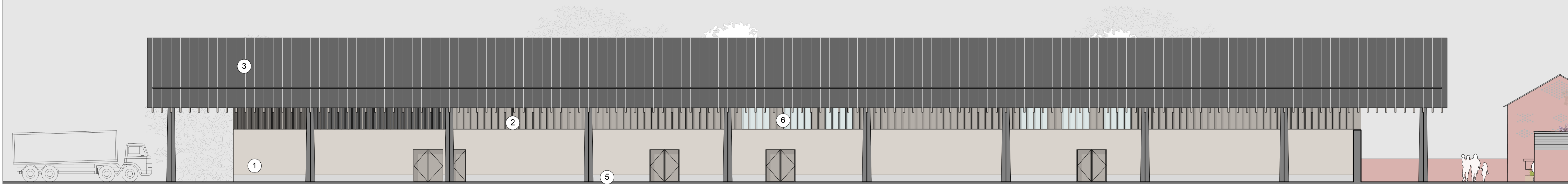


1 South Elevation
1:125

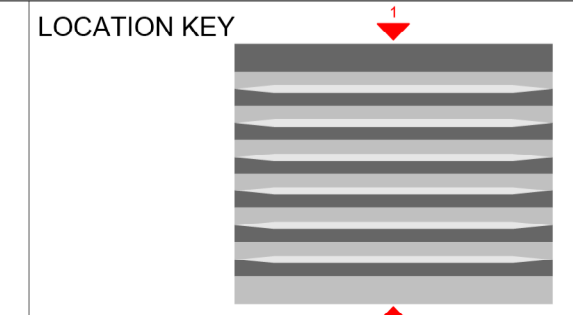
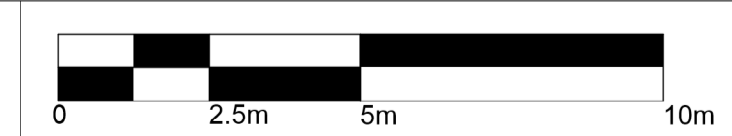


2 North Elevation
1:125

NOTES:
DIMENSIONS NOT TO BE SCALED FROM THIS DRAWING. CONTRACTORS TO NOTIFY ARCHITECTS OF SITE VARIATIONS AFFECTING INFORMATION ON THIS DRAWING. THIS DRAWING IS COPYRIGHT OF GLENN HOWELLS ARCHITECTS.
INTERNAL LAYOUTS ARE SHOWN FOR ILLUSTRATIVE PURPOSES ONLY

KEY: INDICATIVE MATERIALS	
1 Rammed Earth	5 Concrete Plinth
2 Timber Rainscreen Panels	6 Aluminium PPC Composite Windows / Doors
3 Standing Seam Zinc	7 Aluminium Curtain Wall
4 Thin Film PV	8 Timber Brise Soleil

Date	Rev	By	Details
14.12.21	P01	JF	ISSUED FOR PLANNING
13.01.23	P02	JF	PLANNING AMENDMENTS
27.01.23	P03	CQ	PLANNING AMENDMENTS
01.02.23	P04	JF	PLANNING AMENDMENTS



Glenn Howells Architects
321 Bradford St, Digbeth, Birmingham, B5 6ET
Tel. 0121 666 7640 F. 0121 666 7641
mail@glennhowells.co.uk

Date	Scale	Checked
14.12.21	1:125@A1	RK
Project Ref.	Drawing No.	Revision
2237	00-DR-A-(20)1200	P04
Project	Client	
Tatton Motorway Service Area	Tatton Services	

PLANNING