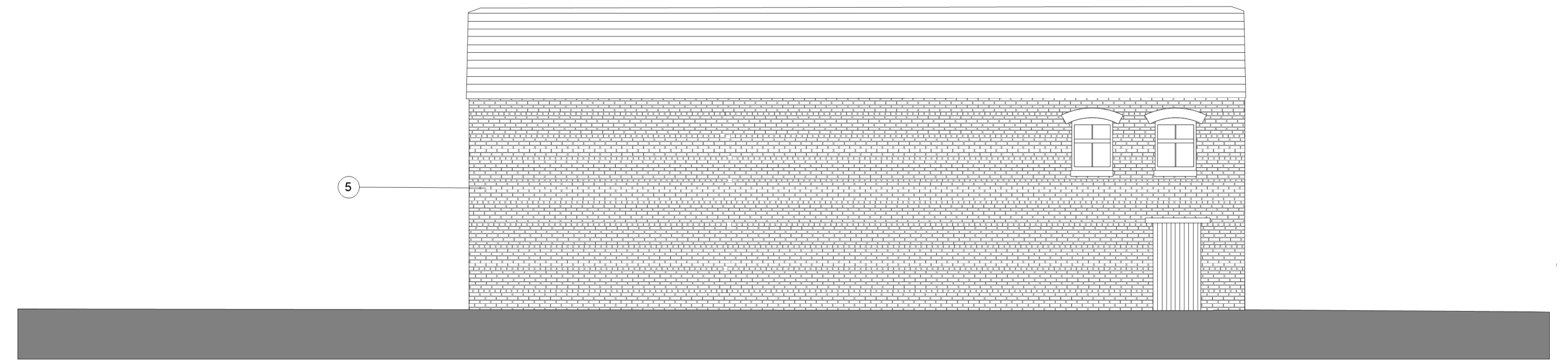
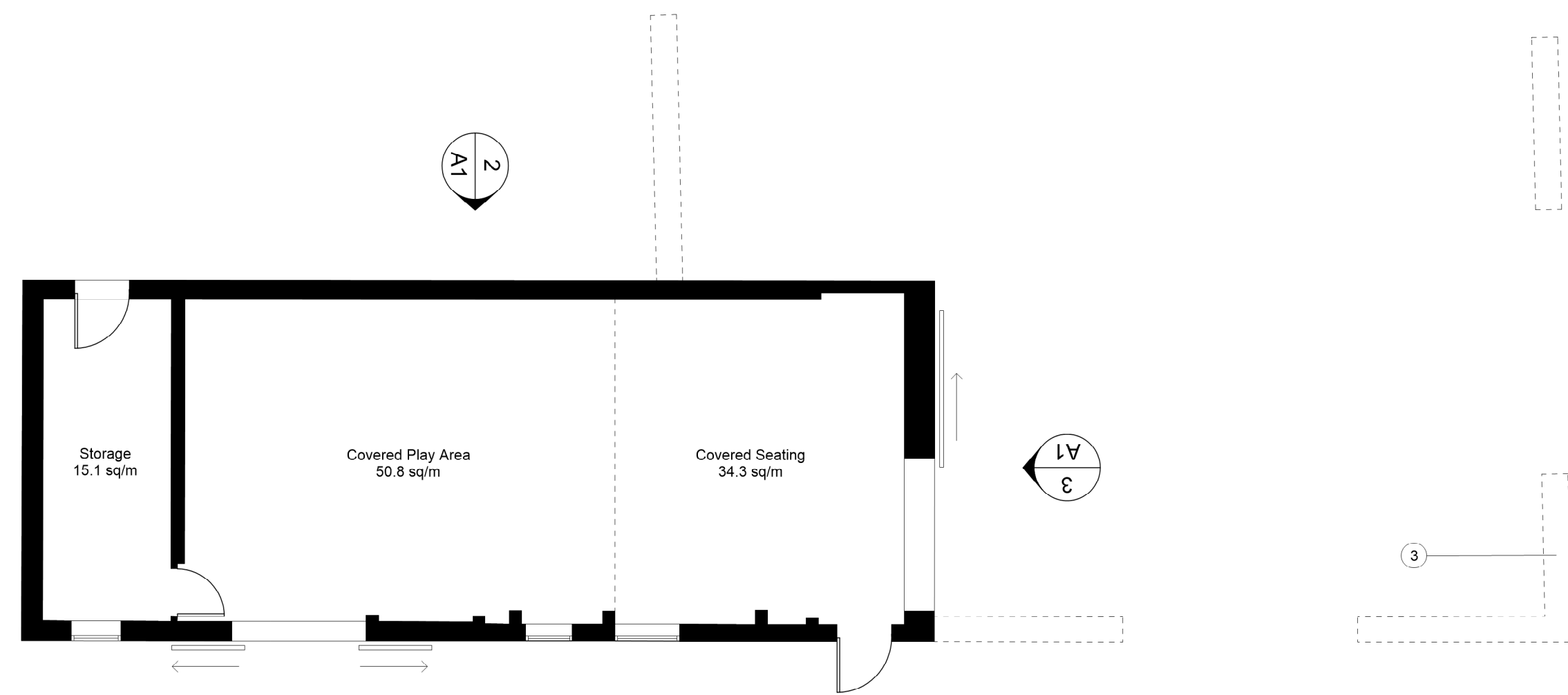


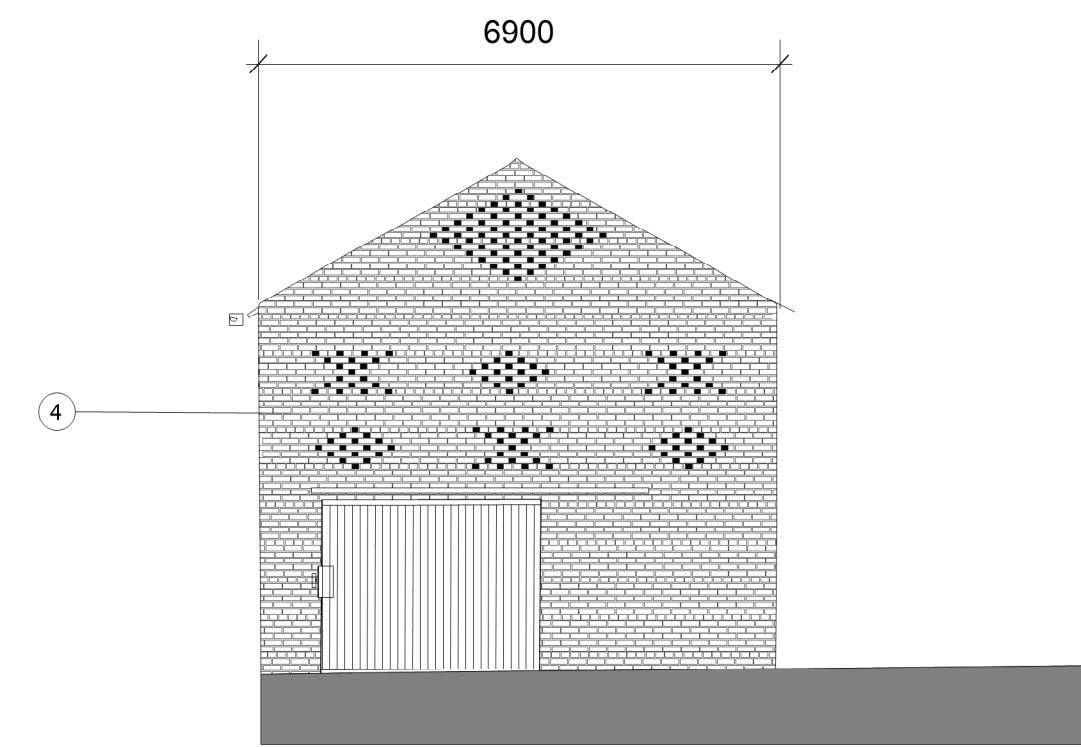
1 West Elevation  
1:100



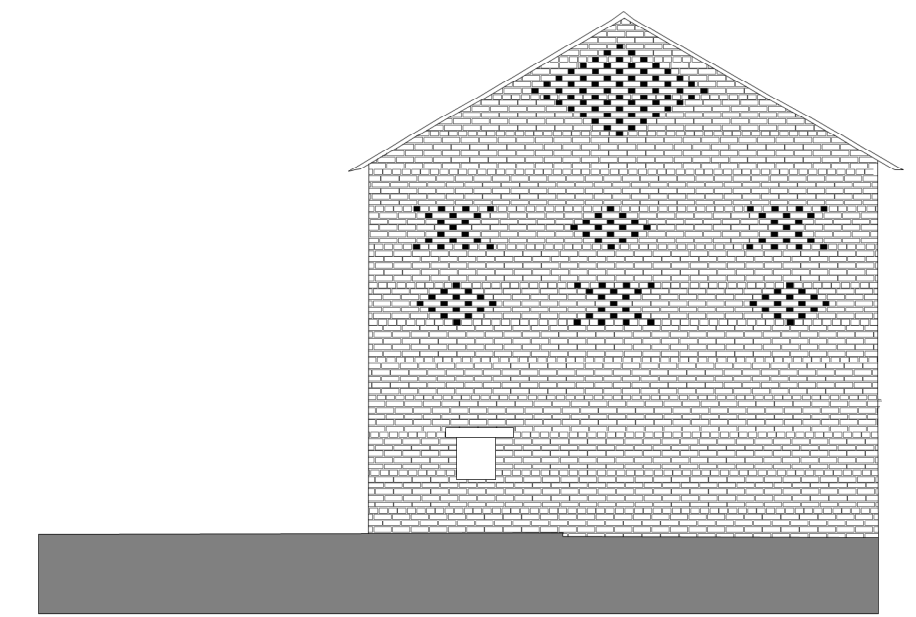
2 East Elevation  
1:100



5 Ground Floor Plan  
1:100



3 South Elevation  
1:100



4 North Elevation  
1:100

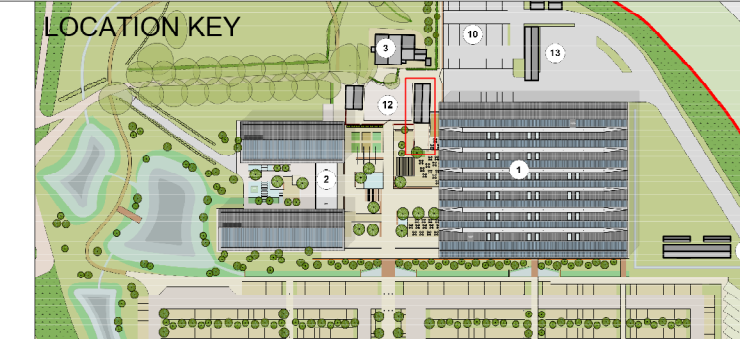
DRAFT FOR COMMENT

NOTES:  
DIMENSIONS NOT TO BE SCALED FROM THIS DRAWING. CONTRACTORS TO NOTIFY ARCHITECTS OF SITE VARIATIONS AFFECTING INFORMATION ON THIS DRAWING. THIS DRAWING IS COPYRIGHT OF GLENN HOWELLS ARCHITECTS.

KEY

- 1 Brickwork and vents restored to original details
- 2 New opening formed for bi-parting barn door
- 3 Low level brick walls rebuilt as landscape feature
- 4 Rebuilt gable elevation - with sliding barn door and brick vent details
- 5 Note further survey work required to assess potential window openings

Date	Rev	By	Details
21.12.22	P01	CQ	Draft for comment



**Glenn Howells Architects**  
321 Bradford St, Digbeth, Birmingham, B5 6ET  
Tel. 0121 666 7640 F. 0121 666 7641  
mail@glennhowells.co.uk

Drawing Title  
East Barn - Elevations - Proposed

Date	Scale	Checked
21.12.22	1:100@A1	RK
Project Ref.	Drawing No.	Revision
2237	00-DR-A-(20)4201	P01
Project	Client	
Tatton Motorway Service Area	Tatton Services	