

# Highway Asset Management Policy 2023

---

[www.cheshireeast.gov.uk](http://www.cheshireeast.gov.uk)

Working for a **brighter future**  together



## Version Control

Version	Purpose/Change	Date
1.0	Final	December 2022

**Contents**

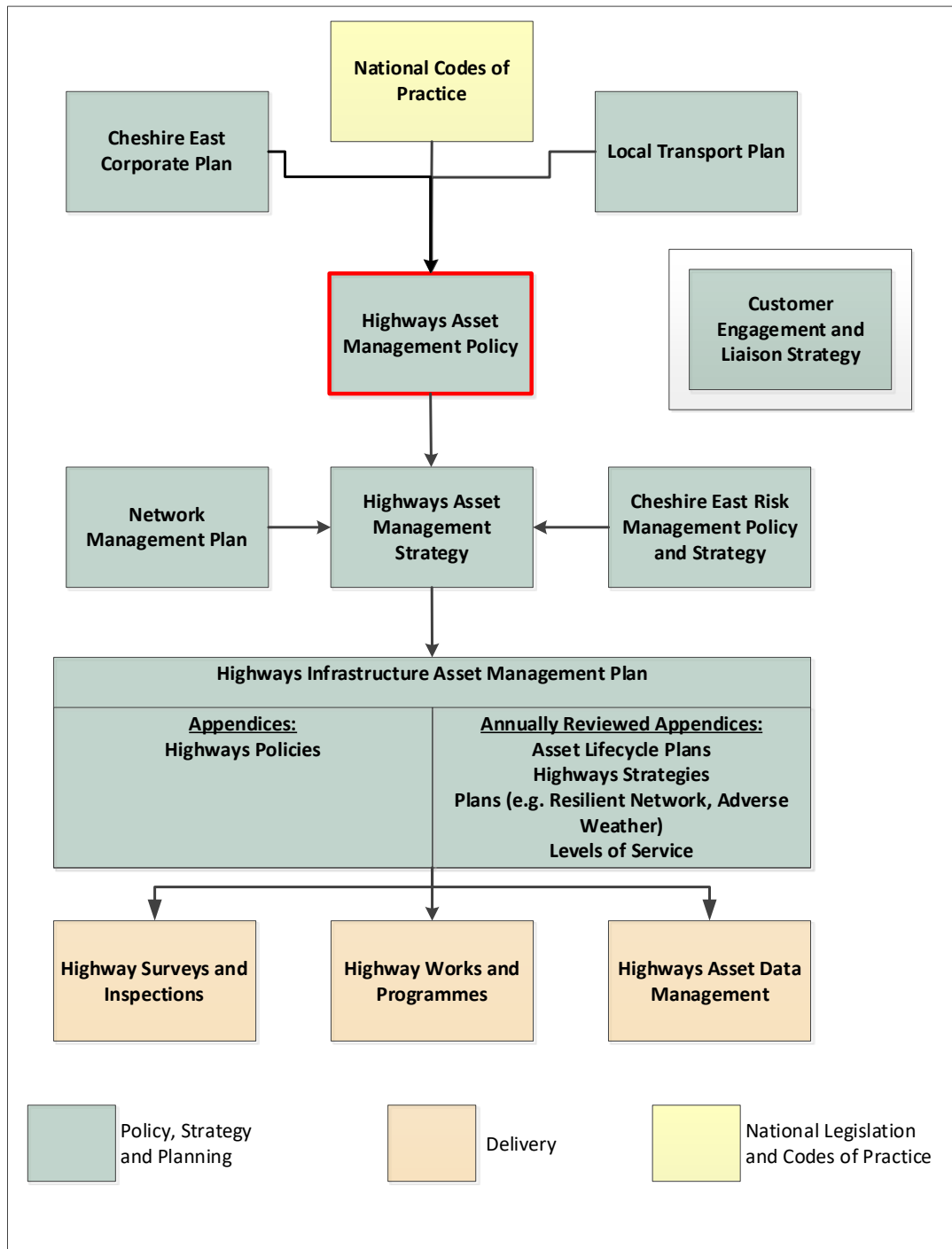
Document Structure ..... 1

Highway Asset Management Policy..... 2

    Our Priorities..... 2

DRAFT

## Document Structure



## Highway Asset Management Policy

Asset management is defined as:

**“A systematic approach to meeting the strategic need for the management and maintenance of highway infrastructure assets through long term planning and optimal allocation of resources in order to manage risk and meet the performance requirements of the authority in the most efficient and sustainable manner”**

Highway Infrastructure Asset Management Guidance – UKRLG/HMEP, May 2013

The highway network is the single largest asset that the Council maintains. The current gross replacement cost for the local highway network with its associated assets and land values, stands at over £6 billion.

Using asset management principles are crucial to establishing the risks associated with available budgets and delivering the best value in the management and maintenance of highway assets.

The Cheshire East highway network is used daily by the majority of residents and those passing through the Borough and is fundamental to the economic, social, and environmental wellbeing of the community. It helps to shape the character and quality of the local areas that it serves and makes an important contribution to wider local authority priorities including regeneration, carbon reduction, social inclusion, community safety and health.

The Council recognises the vital role played by Cheshire East’s local highway network and its management to asset management principles in supporting the authority’s vision and its strategic priorities. Our primary focus will be on achieving the following objectives:

1. The Council is committed to making the best use of its budgets and advocates an asset management approach for the maintenance of the local highway network, to help deliver the best long-term outcomes for residents, businesses, and highway users.
2. The Asset Management Strategy will set out how Highway Asset Management will be delivered in Cheshire East. This strategy will consider current and projected financial pressures and opportunities and will explain how available funds and resources should be utilised to maximise their benefit.
3. The Council will continue to be a high performing authority that uses its resources well, investing in the **‘right treatment, at the right place, at the right time’** to secure a long-term sustainable future for the highway infrastructure for the borough.
4. The work we do contributes to the delivery of the priorities outlined in the Council’s Corporate Plan 2021-2025:

## Our Priorities

### **A Council which empowers and cares about people**

Adopt an effective Asset Management Strategy which will support the development of an effective transport system that helps facilitate a high quality of life, meeting the needs of the individual, whilst remaining responsive to the changing needs of businesses and the local economy. This approach will ensure that the condition and performance of highway assets are enhanced and continuously monitored, helping to optimise planned maintenance programmes.

### **An open and enabling organisation**

Adopt an effective asset management approach that will ensure that the highway infrastructure assets support the delivery of services and the local economy, considering the long-term performance of the asset. Local communities and businesses will see the positive effects of investment that supports initiatives to deliver optimum infrastructure within available resources.

The approach will provide the optimum levels of planned maintenance activities with the available funding over the lifecycle of all asset types. This will allow the effective coordination of works to reduce road closures and their impacts, as well as providing maximum network availability and reliability, which supports the forward visibility of planned maintenance works.

The delivery of the service is led by an effective and efficient Asset Management System, which will optimise and support the resources to maintain and improve the Cheshire East highway network. Working with partner organisations and communities enables the approach which supports our values in delivering a lean, innovative, and flexible service for local residents, communities and businesses.

The Council will work to engage with communities regarding the operation of the highways network and will work to increase the forward visibility of the it works it undertakes on the highway.

**A thriving and sustainable place**

The asset management approach sets out a framework that will provide an integrated transport system that minimises cost over time, maximises value to the community and environmental benefit, whilst keeping people healthy and supporting lower carbon transport choices. It will also integrate sustainable solutions and treatments, which minimise waste and landfill. In addition, an effective Asset Management Strategy will support the delivery of road safety initiatives, to help reduce road traffic accidents.

DRAFT